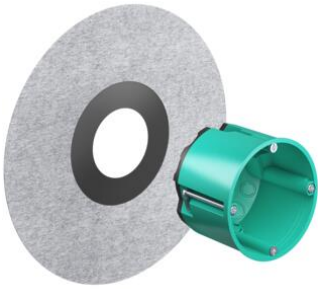


Damp room one-gang junction box



Damp room one-gang junction box

- Peripheral 5 cm wide adhesive collar to hold mineral sealing materials, e.g. sealing slurries
- Convenient sealing into the sealing layer thanks to the fleece-like surface structure of the sealing sleeve
- Tested and certified according to DIN 18534
- Air-tight and watertight design with sealing membranes for six cables up to max. Ø 11.5 mm with integrated cable retention
- Can be used with the KAISER plaster compensating rings (Art. No. 9155-61 or -62) with built-up wall coverings

Article no:	9264-42
EAN:	4013456590137
For panel thickness	7 - 40 mm
Depth	62 mm
Cut hole Ø	68 mm
Screw spacing	60 mm
Cable entries of up to Ø 11.5 mm	6
Air-tight	Yes
Watertight acc. to DIN 18534	Yes
Packaging inner/dispatch	10/100

The new damp room one-gang junction box from KAISER provides optimum sealing for electrical installations in areas exposed to splash water, process water and cleaning water. Thanks to the 5 cm peripheral adhesive collar, the innovative, DIN 18534-tested and certified waterproof one-gang junction box can be easily integrated into the sealing layer (e.g. sealing slurry or sealing membranes) and maintains the protection target of the wall. Uncontrolled moisture exchange is permanently prevented thanks to the precisely fitting cable entries created using the KAISER universal opening cutter.

- For professional installation in sealed interior rooms, such as commercial kitchens, bathroom modules or damp rooms in hospitals
- Tested and certified watertightness in accordance with DIN 18534
- For installation openings Ø 68 mm
- Six air-tight and watertight cable entries
- Device screws with plus-minus drive

