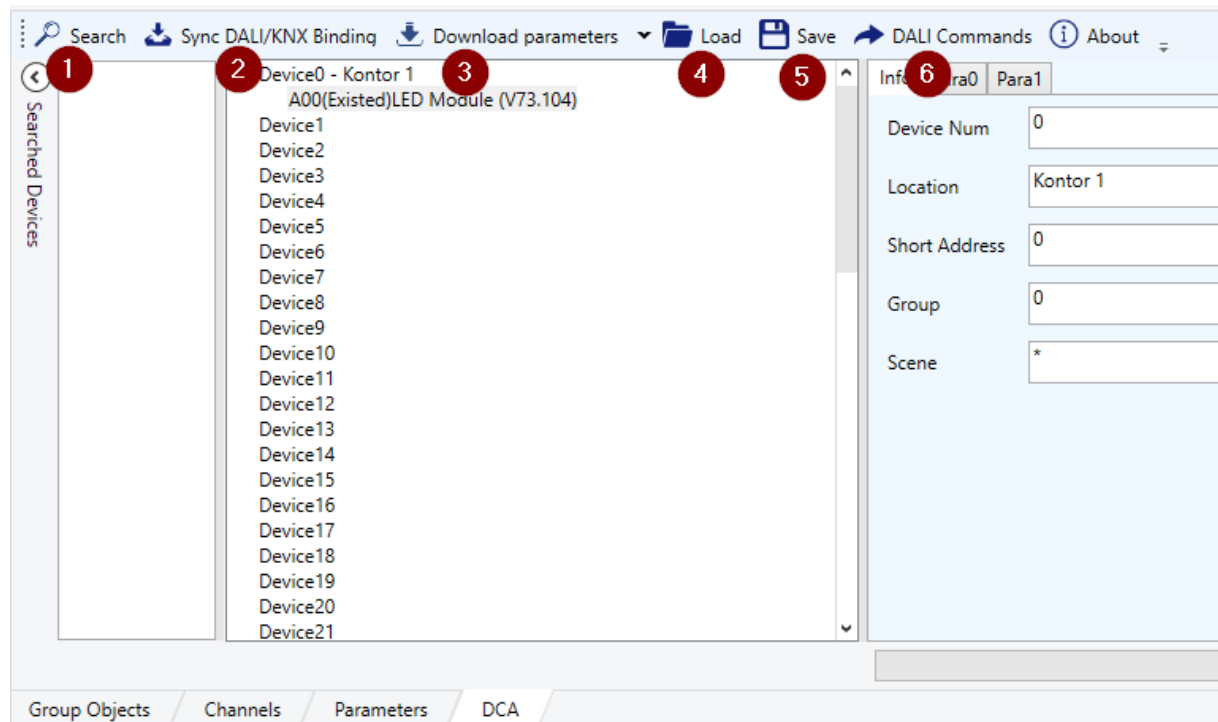


KNX Dali Gateway

DA64-230



Funksjoner

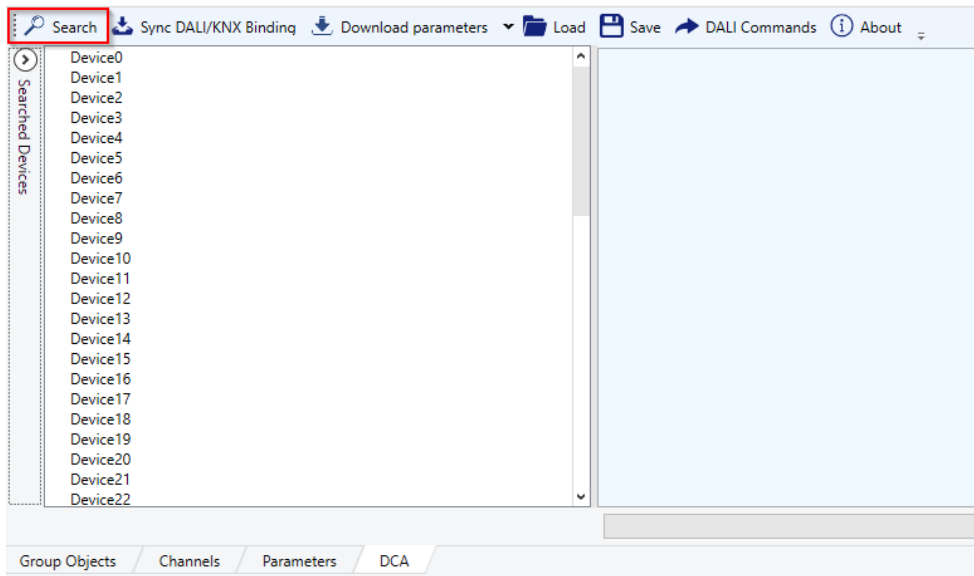


1. Søke opp lamper (ECG)
2. Synkroniser Dali og KNX
3. Laster ned endringer/parameter som er gjort i DCA appen.
4. Laste inn konfigurasjon
5. Lagre konfigurasjon
6. Dali kommandoer

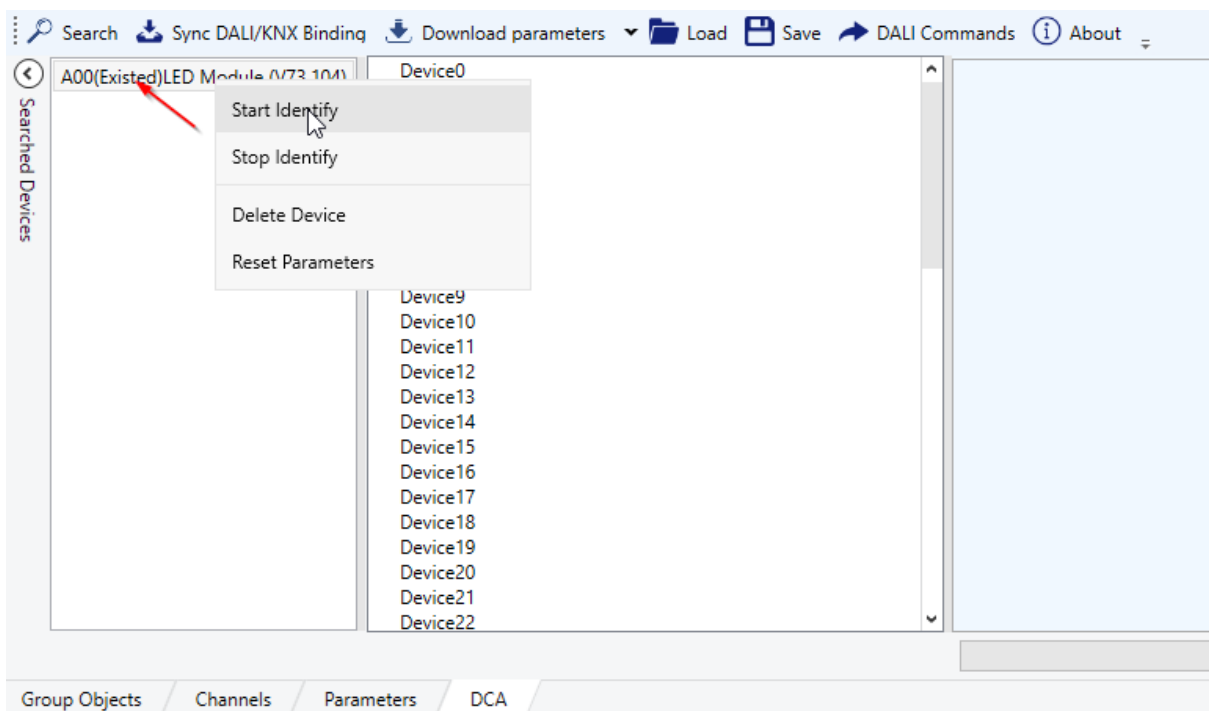
Forklaring på koder i display:

Anzeige	Bedeutung
OK	Device status/interfaces (display switches off after 10 s)
00 63	Selected DALI address
BR	All DALI devices on/off (broadcast)
AI	Search and automatic addressing of connected DALI devices active
KI	Assignment of connected DALI devices to KNX devices active
E0	Error message: KNX bus error
E1	Error message: KNX-TP UART error
E2	Error message: DALI voltage too low
E3	Error message: DALI short circuit

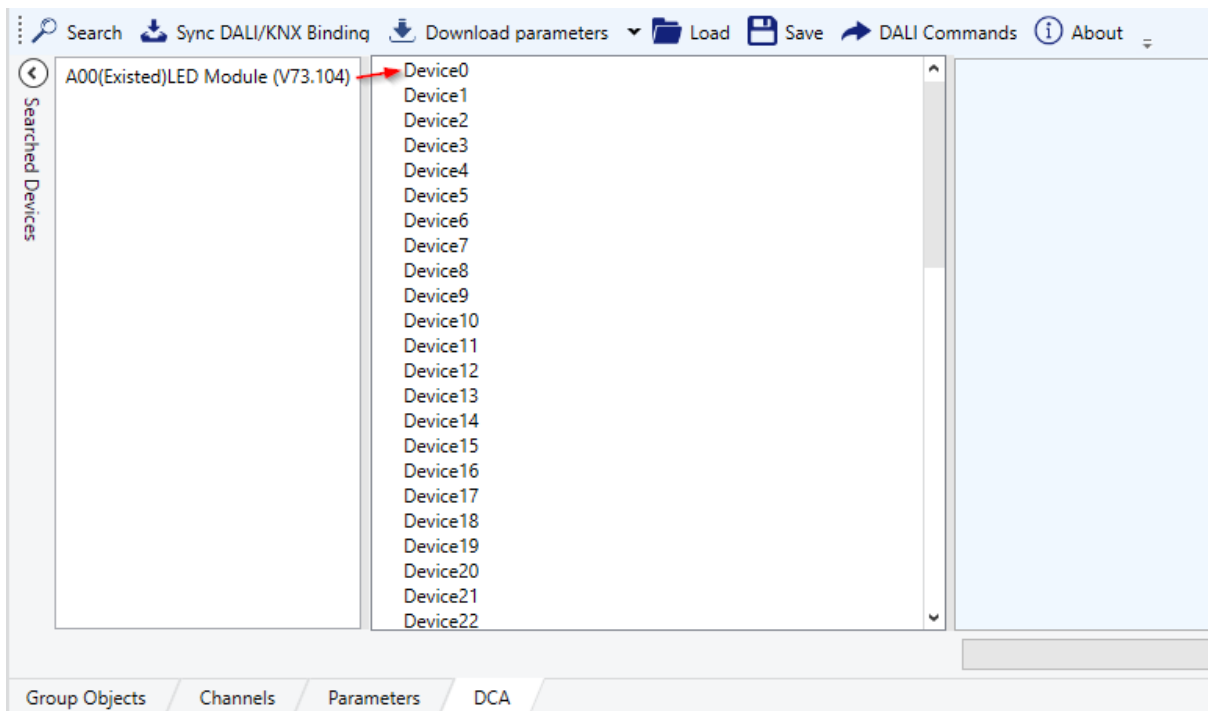
1. Trykk på Search for å søke opp lamper.



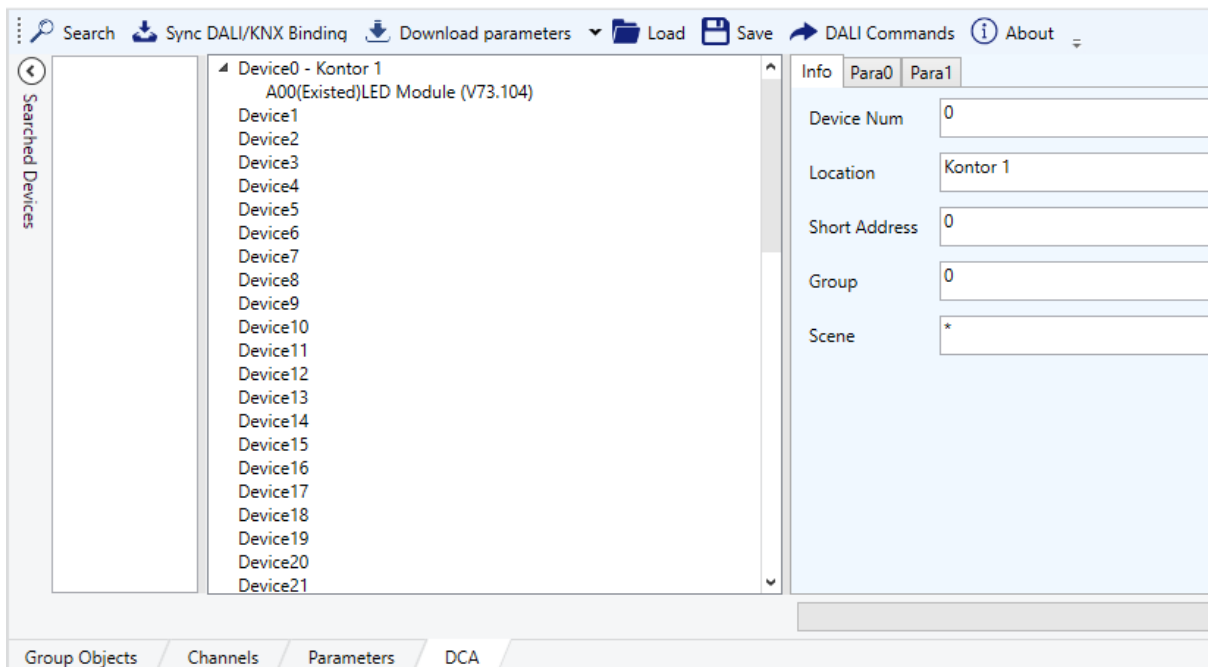
2. Høyreklikk på lampene for å blinke dem ut.

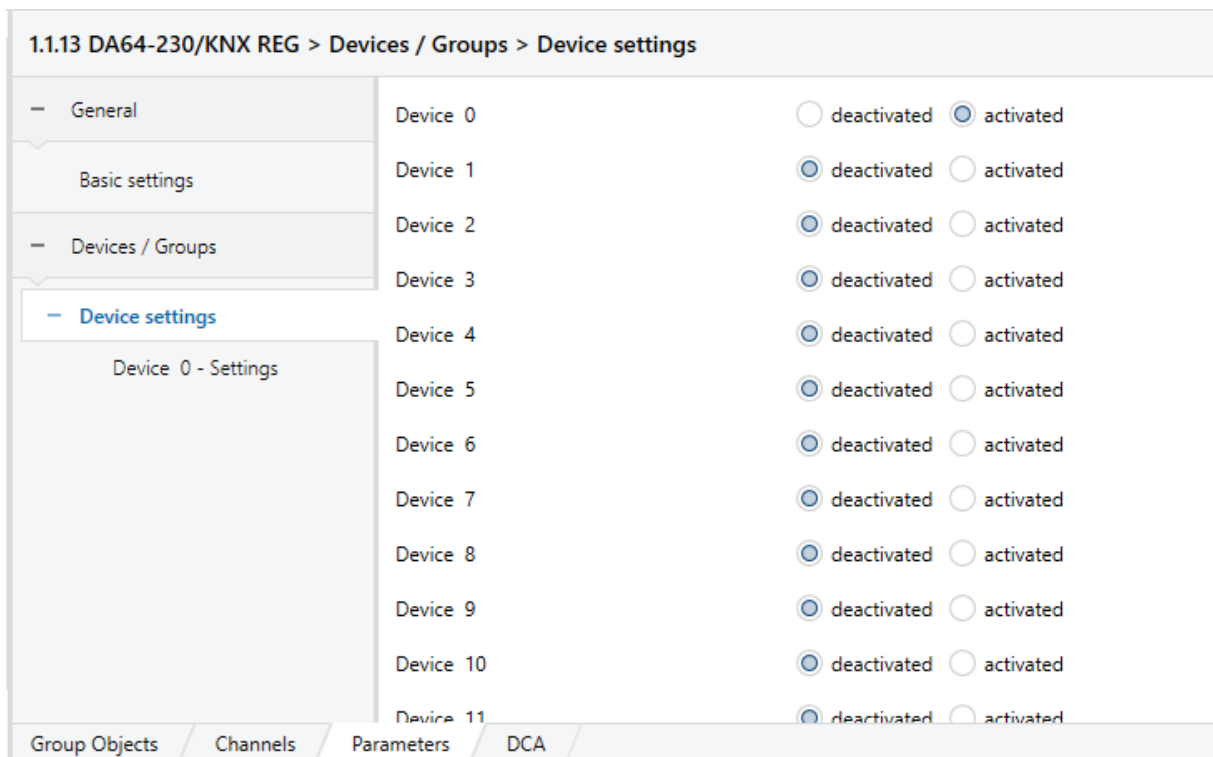
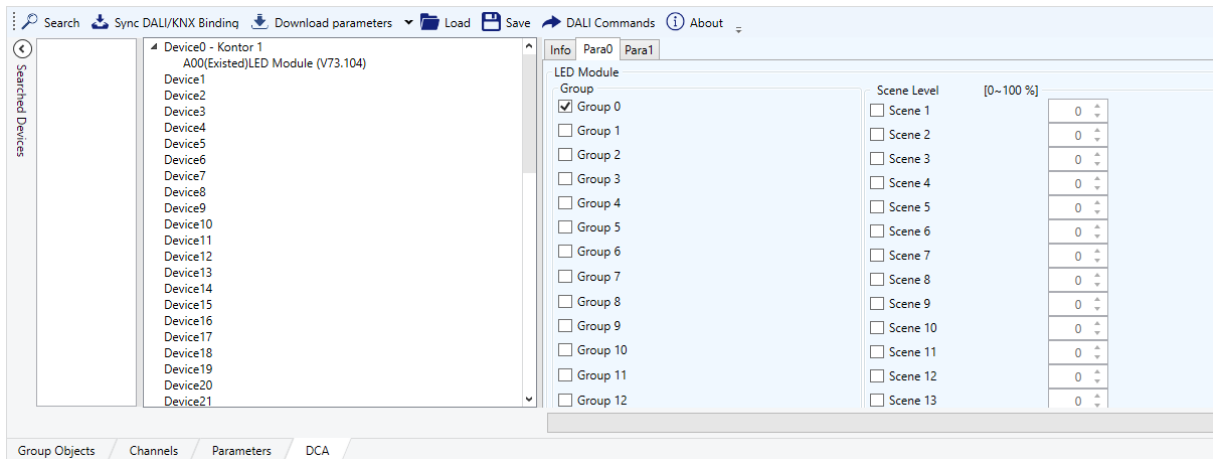


3. Dra lampene inn i enheter.



4. Navngi og parameter alle lamper.





1.1.13 DA64-230/KNX REG > Devices / Groups > Device settings > Device 0 - Settings

General	Device Type	Standard ECG
Basic settings	Switch On Value (in %)	100
	Switch On Delay (in s)	0
Devices / Groups	Switch Off Delay (in s)	0
	Dimming To Absolute Value	<input checked="" type="radio"/> deactivated <input type="radio"/> activated
Device settings	Switching Off By Relative Dimming	<input checked="" type="radio"/> deactivated <input type="radio"/> activated
	Activate Forced Operation And Send Value (in %)	100
	Deactivate Forced Operation And Send Value (in %)	100
	Inversion of Lock	<input checked="" type="radio"/> deactivated <input type="radio"/> activated
	Behaviour On Activation Of Lock	No reaction
	Behaviour On Deactivation Of Lock	No reaction

Group Objects Channels Parameters DCA

5. Stepper dimmingen, endres dimme tiden.

The screenshot shows a software interface for configuring a device. On the left, a list of devices is shown under 'Searched Devices', including 'Device0 - Kontor 1' and 'A00(Existed)LED Module (V73.104)'. The main panel displays settings for 'LED Module'. The 'Fast Fade Time' parameter is set to 0.325s, which is highlighted with a red box. Other settings include 'Dim Curve' (with a checkbox for 'Linear Dim Curve Active') and 'Current Protector Supported' (with a checkbox for 'Current Protector Active'). The interface also includes a search bar, sync options, and a bottom navigation bar with 'Group Objects', 'Channels', 'Parameters', and 'DCA' tabs.