

Brukerveiledning for Oppsett av KNX/DALI Gateway med DCA APP

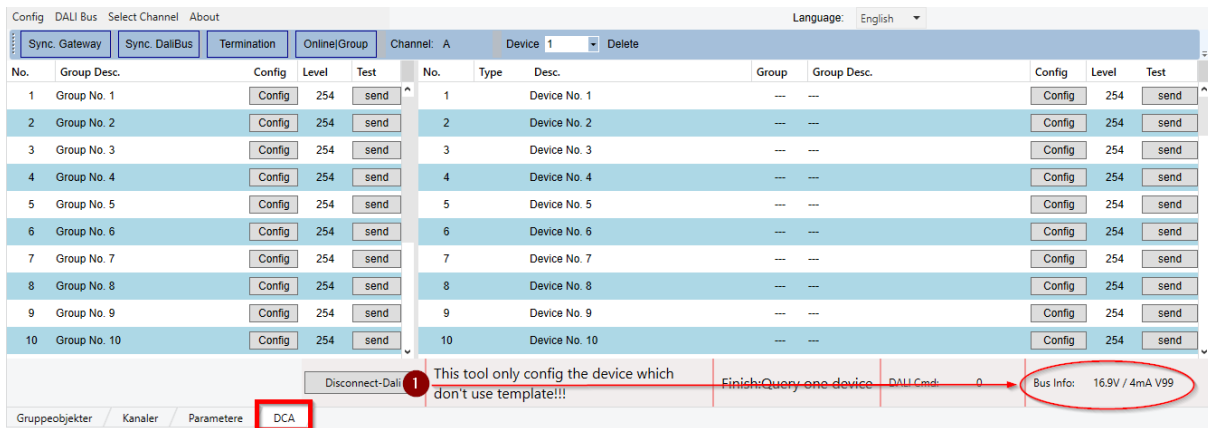
Produkt:

BTDG-01/64.1

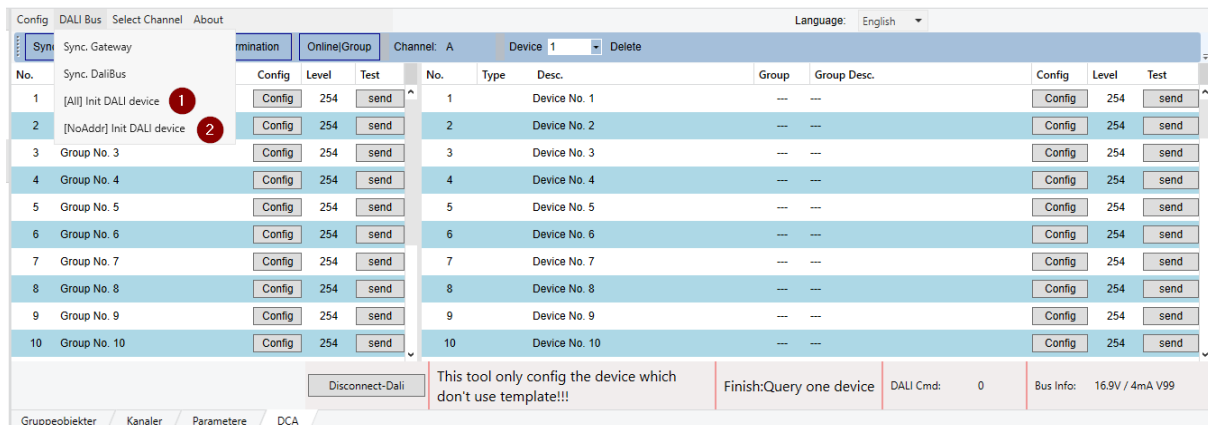
BTDG-02/64.1



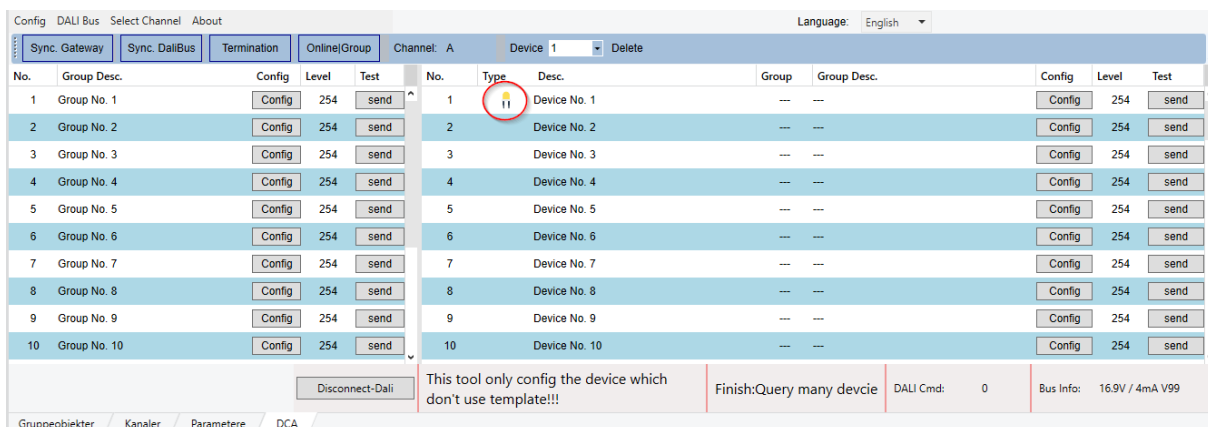
1. Under DCA fliken må man først koble til Dali.



2. Under DALI Bus er det 2 valg som kan brukes for å søke opp lamper: Velges nr.1 legger man til alle lamper på nytt (første gangs installasjon) og velger man nr.2 legges det kun til nye lamper (utvidelse av eksisterende installasjon)



3. Nå vil alle lamper bli listet opp.



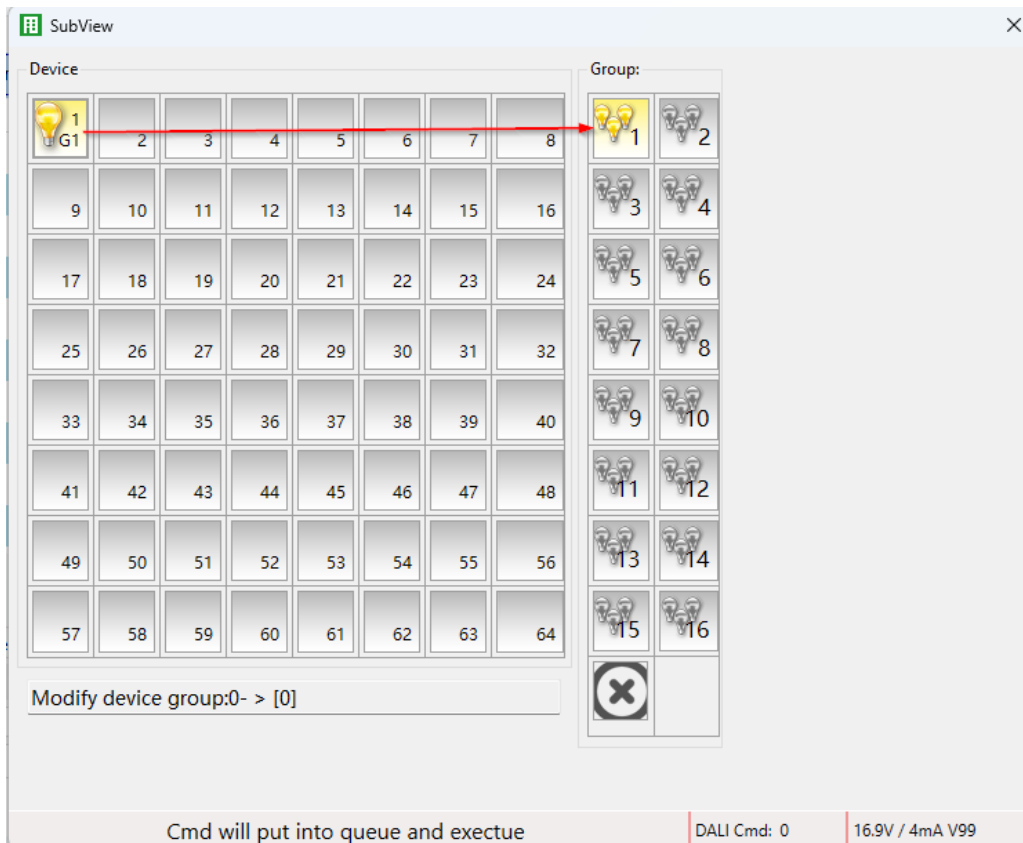
4. Lampene kan nå styres under Config.

The screenshot shows the 'Config DALI' window with several tabs: 'StoreDevice', 'ReadDevice', and 'ApplyUserConfig'. The main table lists parameters with columns for 'No.', 'Group', 'Id', 'parameter', 'Config', and 'Command'. The last row, 'test level(0%~100%)', is highlighted in red. To the right, a summary table shows 'Group', 'Group Desc.', 'Config', 'Level', and 'Test' buttons for each group. A red circle with the number '1' highlights the 'Config' button in the first row of this summary table. At the bottom, status information includes 'Finish:One command', 'DALI Cmd: 0', and 'Bus Info: 16.9V / 4mA V99'.

5. For å gruppere lampene velges Online | Group.

The screenshot shows the 'Config DALI Bus' window with tabs for 'Select Channel' and 'About'. The 'Online|Group' tab is active, indicated by a red circle with the number '1'. The interface is split into two panes. The left pane lists 'Group No.' from 1 to 10, each with 'Config', 'Level', and 'Test' buttons. The right pane lists 'Device No.' from 1 to 10, each with 'Config', 'Level', and 'Test' buttons. A 'Disconnect-Dali' button is visible at the bottom left. A status bar at the bottom right shows 'Finish:One command', 'DALI Cmd: 0', and 'Bus Info: 16.9V / 4mA V99'. A warning message states: 'This tool only config the device which don't use template!!!'.

6. Dra lampene inn i ønsket gruppe.



7. Nå skal lampene være gruppert og all informasjon skal komme opp på listen.

