

LED Wall Light
WL92 Series



Introduction

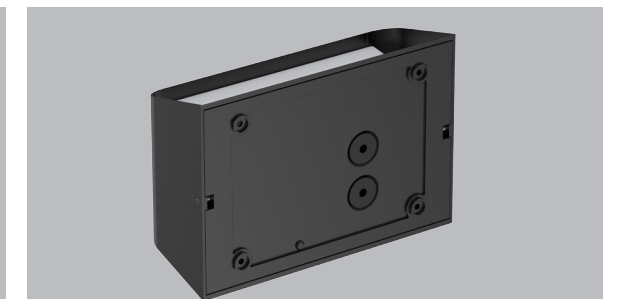
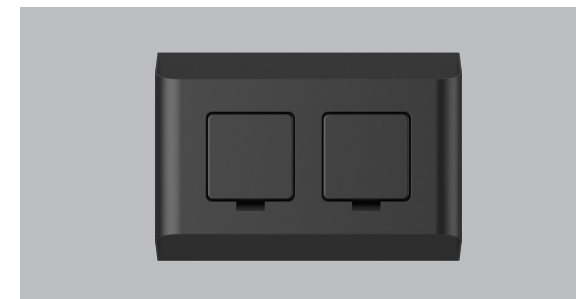
WL92 is a direct & indirect lighting design, users can adjust lighting direction by slide switch, so the multiple lighting ways achieve more application areas demand. It has a compact appearance, ADC12 aluminum housing provides a good heat dissipation. To make a more convenient using experience, the lamp has two sockets which can feed power to some electric equipment, such as hair dryer, charger, mower, camera etc. Non-isolated triac dimmable driver solution achieves great dimming compatibility with worldwide brand dimmers.

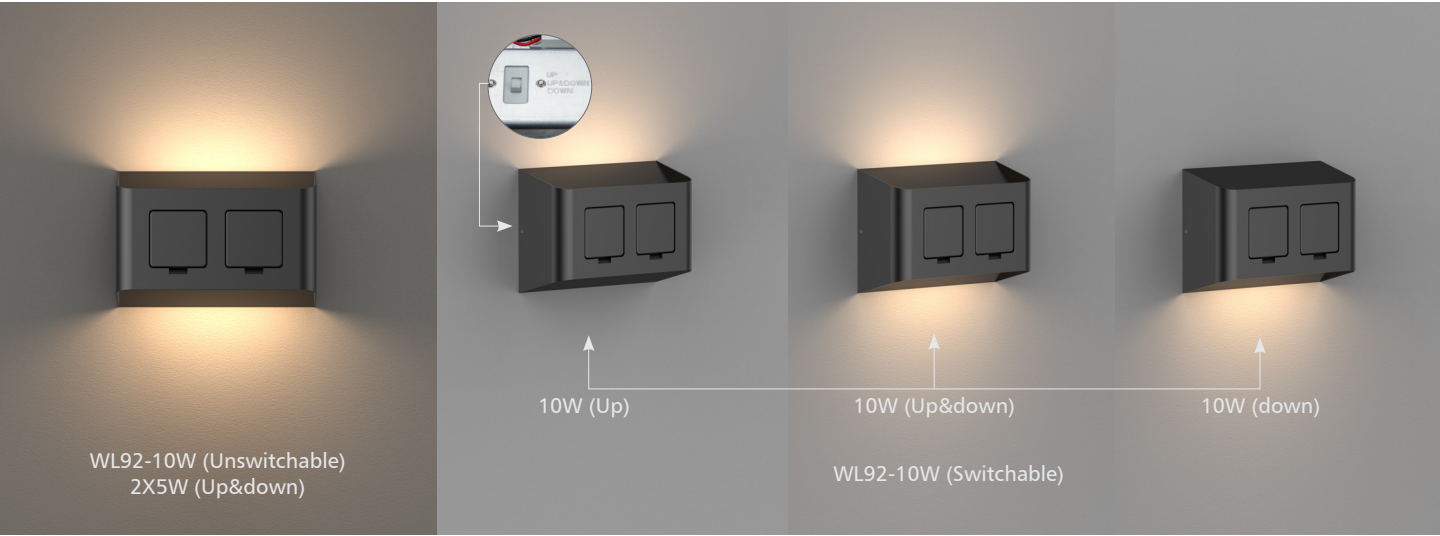
Features

- Two sockets support more convenience for users.
- Socket applicable market: EU/UK/AU (Total power should not exceed 2800W).
- Direct and indirect lighting direction adjustable by slide switch.
- Quick install with loop in/out hole.
- IP54 for the whole lamp.
- Internal flicker free driver.
- Triac dimming way

Application Areas

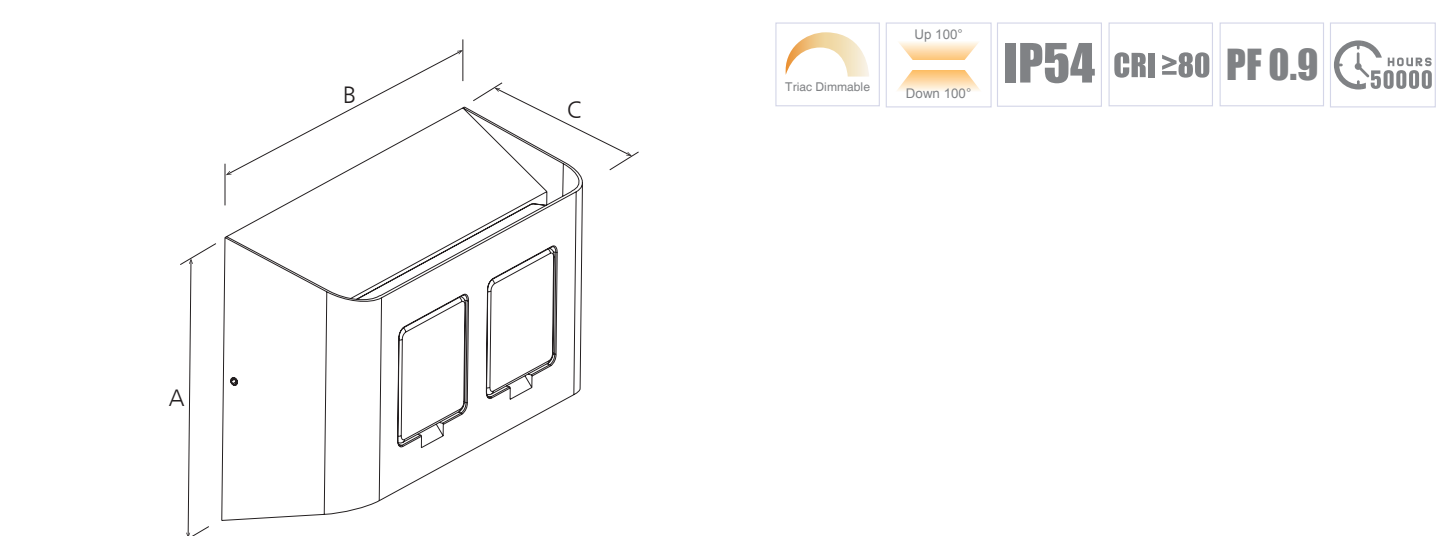
It's designed for indoor and semi-outdoor applications. Indoor application: It can feed power for all electric equipment within 2800W such as hair dryer, charger, projector, coffee maker and other household appliances. Semi-outdoor application: Mower, electric saw, sprinkler, sound etc.





Technical Data Sheet

Code No.			WL92-10W		
Dimension(mm)			220*152*82		
Cutout (mm)			-		
Watt(W)			2×5W (Unswitchable) / 10W (Switchable)		
Rated Input Voltage(V)			AC230V		
Input Voltage(V)			AC200-240V		
LED Module Input			-		
Light Source			SMD		
SDCM			≤6		
CCT(K)			1-CCT: 3000K / 4000K / 5000K / 5700K		
CCT Selection DIP Switch			NO		
Luminous Flux (lm) ±5%	Non-DIM	1-CCT	560-620		
	DIM		550-600		
	Non-DIM	3-CCT	-		
			-		
CRI			80		
Beam Angle (°)			100°		
UGR			-		
LED Driver			built-in		
Dimming Option			Triac		
Sensor			NO		
Emergency Kits			NO		
Electrical Class			Class I		
Ingress Protection (IP Rating)			IP54		
Impact Resistance (IK Rating)			-		
Product Finishing(Base)			Black RAL9005		
Materials of Optics			PC		
Materials of Housing			Aluminium+PC		
Lifetime (hr)			50,000h		
Glow wire test (°C)			750°C		
Operating Temp. (°C)			-20°C ~45°C		
Storage Temp. (°C)			-20°C ~65°C		
Installation			wall mount		



Measurement

Code	Dimension(mm)			Size(mm)	Product Weight (Kg)		Package weight (Kg)		Carton Size(cm)	Qty/CTN	20GP (pcs)	40HQ (pcs)
	A	B	C		N.W/PC	G.W/PC	N.W/CTN	G.W/CTN				
WL92-10W	152	220	82	220*152*82	1.3	1.5	15.6	19.5	50.5*36.5*34.5	12	4824	11508

Driver Datasheet (Non-dimmable)

Total load wattage		10W	
Output	Output Voltage range	DC60-75V	
	Rated output current	135mA	
	Line Regulation	±5%	
	Setup, Rise Time	≤0.5S	
	Flickering Index	≤3%(NO RISK)	
Input	Input Voltage	AC220-240V	
	Rated Input Voltage(V)	AC230V	
	Frequency	50/60Hz	
	Input Current	≤0.06A	
	Rated Input Current	≤0.05A	
	Power Factor	0.9	
	THD	-	
	Efficiency	≥88%	
	No load wattage	≤0.5W	
Protection	Short circuit protection	PASS	
	Over voltage protection	PASS	
	Over temperature protection	PASS	
Safety & EMC	Withstand voltage	-	
	Isolation Resistance	-	
	Surge	IEC/EN61000-4-5(P<25W; L-N:500V, L/N-PE:1KV)	
	EMC Emission	IEC/EN55015, IEC/EN61000-3-2	
	EMC Immunity	IEC/EN61000-4-2,3,4,5,6,8,11;IEC/ EN61547	

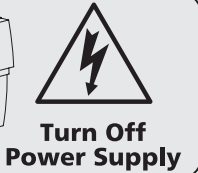
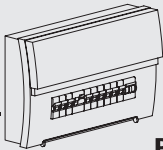
Driver Datasheet (Triac Dimmable)

Total load wattage		10W
Output	Output Voltage range	DC65-75V
	Rated output current	120mA
	Line Regulation	±5%
	Setup, Rise Time	≤0.5S
	Flickering Index	≤3%(NO RISK)
Input	Input Voltage	AC220-240V
	Rated Input Voltage(V)	AC230V
	Frequency	50Hz
	Input Current	≤0.06A
	Rated Input Current	≤0.06A
	Power Factor	0.85
	THD	-
	Efficiency	≥81%
	No load wattage	≤0.5W
Protection	Short circuit protection	PASS
	Over voltage protection	PASS
	Over temperature protection	PASS
Safety &EMC	Withstand voltage	-
	Isolation Resistance	-
	Surge	IEC/EN61000-4-5(P<25W; L-N:500V, L/N-PE:1KV)
	EMC Emission	IEC/EN55015, IEC/EN61000-3-2
EMC Immunity		IEC/EN61000-4-2,3,4,5,6,8,11;IEC/ EN61547

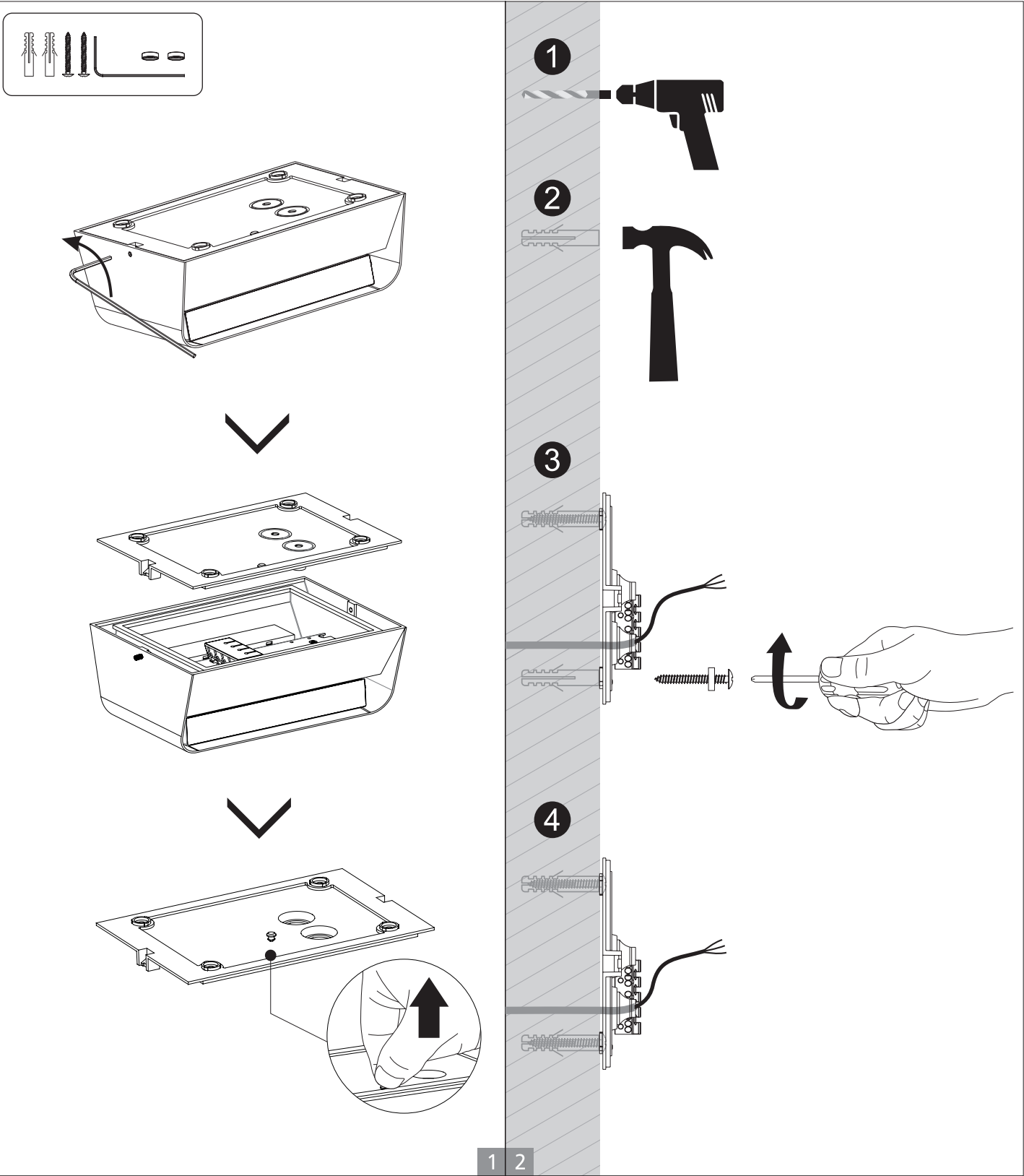
Installation Instruction

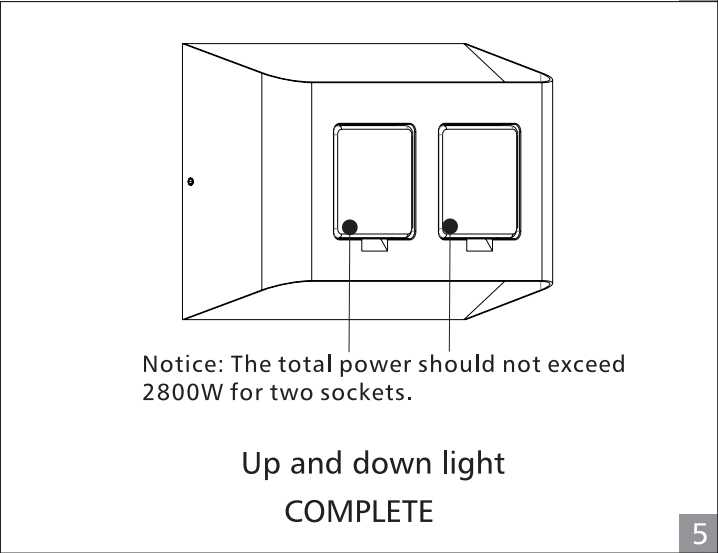
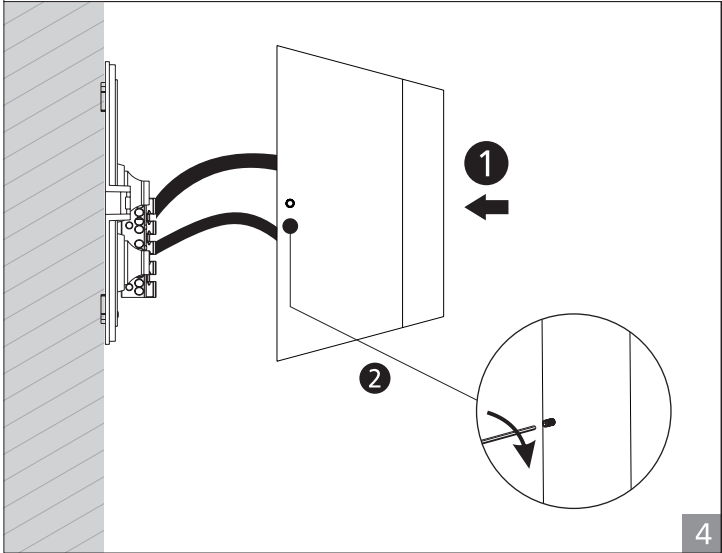
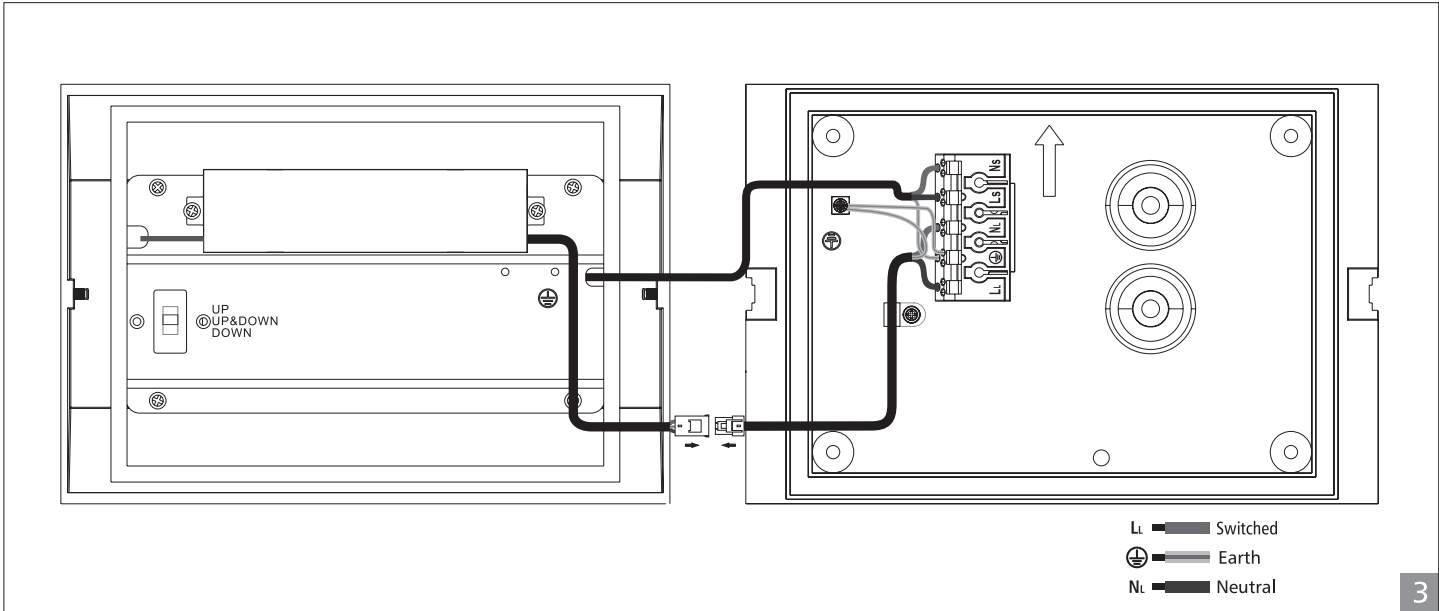
WARNING

- 1.Switch off before installation.
- 2.Switch on only after complete installation and examination of the circuit.
- 3.Professional electrician for installation and maintenance only.



Wall mounted installation







UPSHINE | *Up to Shine, there is life*
光之上，是生活

▼ www.upshine.com info@upshine.com TEL: +86 755 2919 7332 ▼

Add: 2nd building Dingfeng High-Tech Zone, Fuyuan 1st road, FuYong Sub-district, Bao'an, Shenzhen China