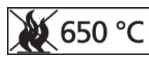
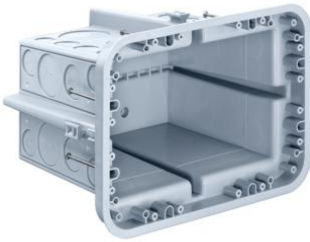


## Wire-pull casings



## Extra-large flush-mounted junction boxes

<b>Article no:</b>	<b>9916.21</b>
EAN:	7611614261751
Length	250 mm
Width	180 mm
Depth	185 mm
Tube entries up to M20	4
Tube entries up to M25	20
Tube entries up to M32	8
Tube entries up to M40	8
Tube entries up to M50	4
Extensive pull-out apertures	8
Intake for Prefix	4
Number of nails	8
Dispatch	5

KAISER wire-pull casings ensure expert cable routing through conduit networks. According to DIN 18015-1, conduit lengths of more than 15 m and with more than two bends require wire-pull casings that allow cables to be added or retrofitted at any time. Wire-pull casings provide multiple conduit entry options and maximum free space to ensure a continuous cable network, including with subsequent changes to the electrical installation.

- Quick and secure installation using pre-inserted nails
- Clean stripping where exposed concrete is required
- High dimensional stability, no internal support required
- Multiple conduit entry options
- Stackable

