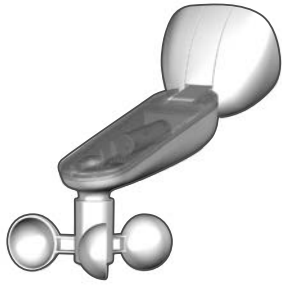


Wind Sensor



Installation instructions



	Lithium battery - AA cannot be replaced Lithium battery life: 10 years
	868 MHz (EN 300 220) - 100 m
IP	IPx4
	-10°C / +70°C
	-10°C / +60°C
	260 x 104 x 130 mm
	R&TTE 1999/5/CE

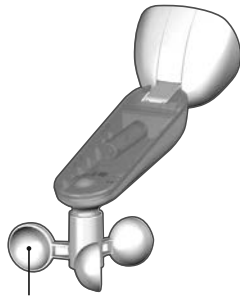
www.deltadore.com

1. Comment fonctionne votre capteur ?

1.1 Presentation

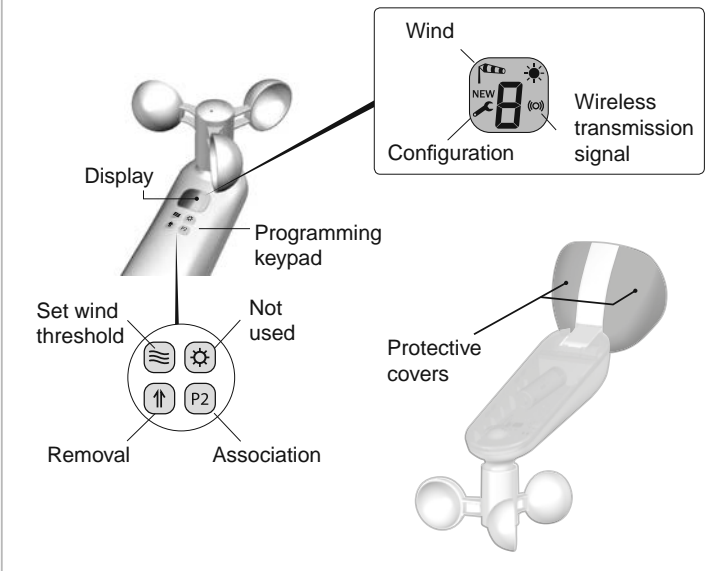
The wind sensor is designed to control outdoor blinds automatically according to wind speed and sunshine.

This sensor is associated via wireless with one or more receivers controlling the different shutters in your installation.



Wind sensor

2. Description

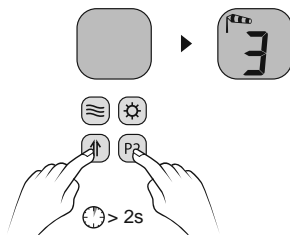


3. Activation

The sensor must be activated before being used for the first time.

To do this, press and hold the and buttons for 2 seconds.

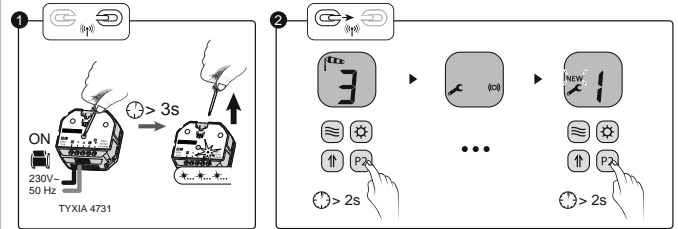
The display screen will turn on.



The wind sensor switches automatically into energy saving mode after 30 seconds of inaction.

Before each use, «activate» the sensor by pressing any button.

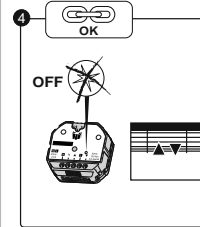
4. Association



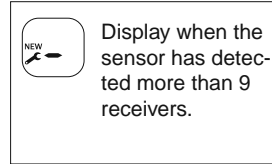
- Set the receiver(s) to association wait mode.

- Press and hold the button for 2 seconds.

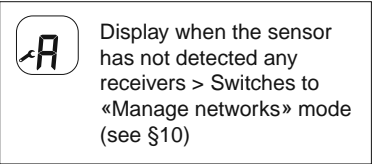
- The symbols and are displayed while the device searches for receivers.
- The detected receiver number is displayed on the screen, and the symbol «NEW» appears.
- Press and hold the button to confirm the association.



- On the receiver(s) check that the association was successful. The receiver LED stops flashing and the shutter briefly operates twice.



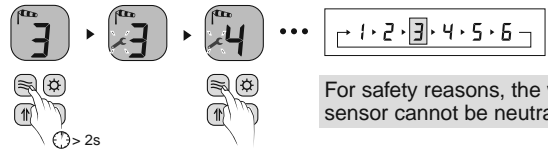
Display when the sensor has detected more than 9 receivers.



Display when the sensor has not detected any receivers > Switches to «Manage networks» mode (see §10)

5. Set wind threshold

To protect the shutter or blind equipment, select the wind threshold recommended by the manufacturer.



For safety reasons, the wind sensor cannot be neutralised.

- Press and hold the button for 2 seconds.
- The symbol will flash.
- Press and hold the button to select the next value.

The mode is exited automatically after 5 seconds of inaction.

1	10 km/h threshold	Slight breeze
2	20 km/h threshold	Gentle breeze
3	30 km/h threshold	Moderate breeze (default value)
4	40 km/h threshold	Fresh breeze
5	50 km/h threshold	Strong wind
6	66 km/h threshold	Very strong wind

6. Use example for TYXIA 4731

For the warranty and protection of your shutters, the wind sensor is recommended for installations which include Motorised Blackout Blinds.

Associated products:

TYXIA 630 pack P/N: 6351392



Receiver
TYXIA 4731
P/N: 6351390

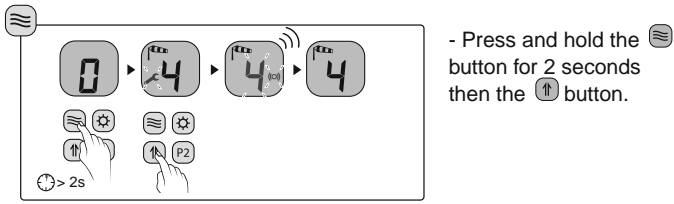


Remote control
TYXIA 1605
P/N: 6351391

7. Test

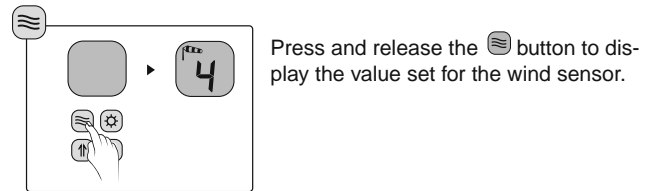
To test that the sensors are operating correctly.

- The sensor simulate the setting threshold and sends the required command to the receiver.



8. Display of Wind Sensor setting

You can view the saved setting



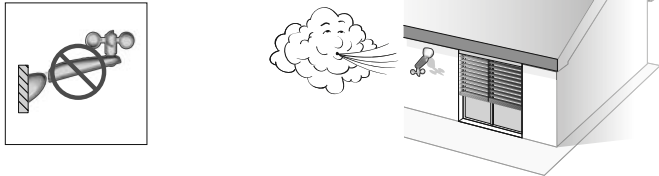
The mode is exited automatically after 5 seconds of inaction.

9. Installation

9.1 Location

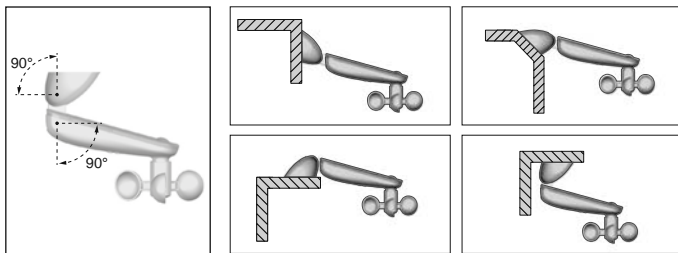
Install the Wind sensor near the associated blinds.

The wind sensor cups must be positioned horizontally and facing downwards.

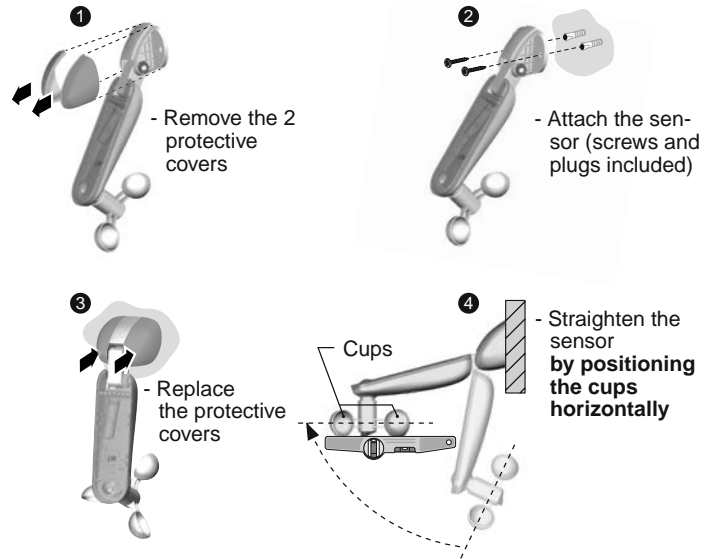


9.2 Assembly

Adapt the hinged mount to your installation.



9.3 Installation



9.4 Maintenance and cleaning

To ensure optimum operation of the wind/sun sensor:

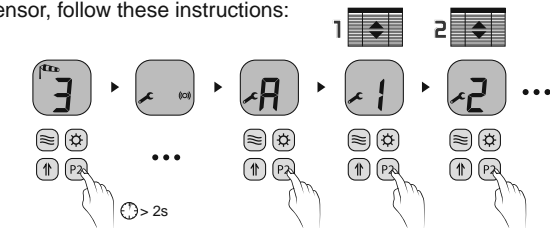
- Regularly check that the wind sensor is rotating freely.
- Ensure that the sun sensor is free of dust.

If necessary, clean the cover with a damp cloth. (Do not use abrasive cleaning products or chemical solutions which could damage the surface of the cover.)



10. Remove an association

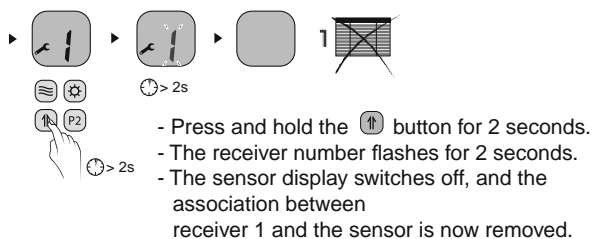
To remove a receiver associated with the sensor, follow these instructions:



- Press and hold the button for 2 seconds.

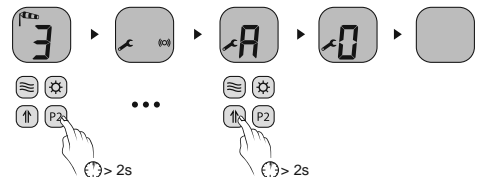
«Manage networks» mode

- The device runs a search for associated receivers.
- Press the button repeatedly to select the receiver to be removed. The associated blind will operate briefly.



11. Remove all associations

To remove all receivers associated with the sensor, follow these instructions:



- Press and hold the button for 2 seconds.

- Press and hold the button for 2 seconds.
- The display will show then switch off.