

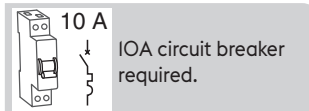
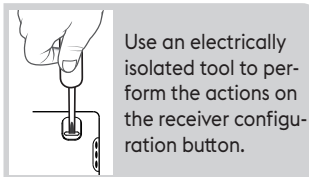


EN - Receiver for Blackout Blinds

**Recommendations**

• **IMPORTANT:** the control wires are not insulated from the mains power supply. All connected equipment must be marked CE and meet the requirements of the low voltage devices as well as assembly recommendations. Local control wires can be extended up to 10 m (separate from the 230 V).

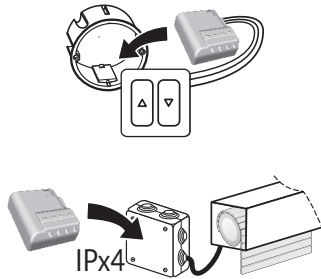
• The roller shutter high and low stops must be set before the receiver is installed.



**1 - Installation**

230V~ **Switch off the installation power supply**  
**OFF**

You can install the receiver for roller shutter in a flush-mounted box behind a switch or control push-button or in a sealed box inside the roller shutter, a safe distance from metal parts.



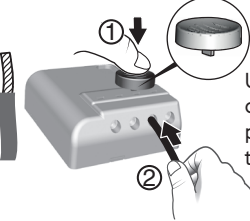
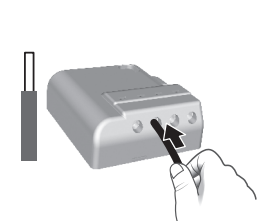
**1.1 Connection instructions for terminals 1 2 3 4.**

- Strip the wires while respecting the strip length specified on the product.  
- Push the wire fully into the terminal.

Ø 0,75 - 1,5 mm<sup>2</sup>

**1.1.1 Solid wires**

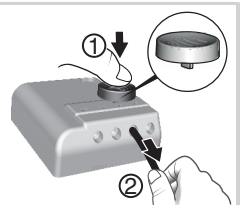
**1.1.2 Stranded wires**



Using the tool supplied or a 2.5 mm screwdriver, press the button of the front terminal then insert the wire.

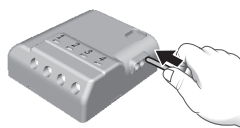
**Removal recommendations**

- Switch off the power supply.  
- Use the tool supplied or a 2.5 mm screwdriver to press the button of the front terminal before removing the wire.

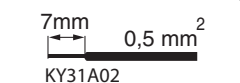


**1.2 Connection instructions for IN1 - COM - IN2 terminals**

- Use the wires supplied.  
- Push the wire fully into the terminal.



Do not strip the wires when they are connected to the product as you could damage the internal connector.



**Removal recommendations**  
Turn the wire while pulling on it.

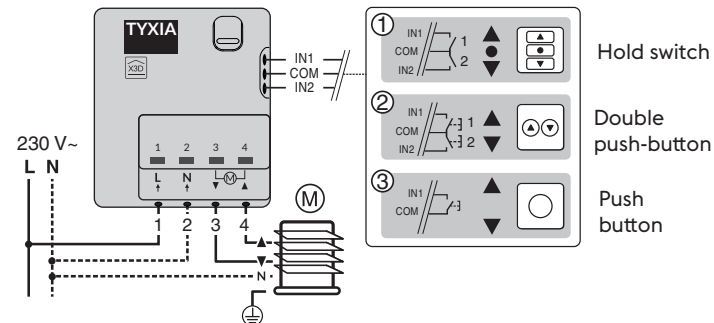
**Technical characteristics**

- Power supply: 230 V~ 0.6 VA
- Operating temperature: -10°C/+40°C
- 2 Powered contact outputs: 2A
- Stand-by consumption: 0.06 W
- IP 40 (flush mounting box)
- Number of associated transmitters: 16 maximum
- Dimensions: 41 x 36 x 14.5 mm
- Storage temperature: -10°C/+70°C
- X3D wireless remote control device: 868.7 MHz to 869.2 MHz



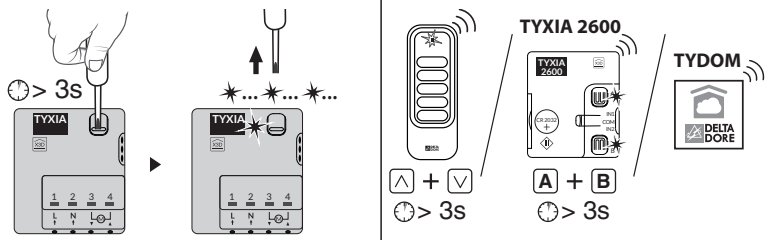
**1.3 Connection**

- Connect the motor control wires to terminals 3 and 4 (motor lowering control wire to terminal 3, raising control wire to terminal 4).
- Connect the switch to the IN1 - COM - IN2 terminals.
- Connect the 230 V power supply to terminals 1 and 2.
- Switch the installation power back on to continue with the association operation.



**2 - Association**

- 1 - Press and hold the receiver button for 3 seconds until the LED flashes, release.
- 2 On the transmitter:  
- Send the association command (Refer to the user guide).



- 3 When the receiver LED has stopped flashing. The products are associated.

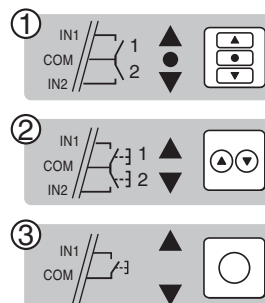
**3 - Configuration**

Configure the receiver according to the type of switch connected.

**Mode 1:** Hold switch  
Raise/Stop/Lower

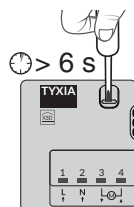
**Mode 2** (by default):  
Raise/Lower double push-button  
Raise + Lower: Stop

**Mode 3:** Raise/Stop/Lower/Stop push-button



To modify the receiver configuration.

- Press the receiver's button for 6 seconds.
- The LED flashes, then becomes steady, release. The number of flashes corresponds to the current mode.



For the warranty and protection of your shutters, we recommend installing an outdoor sensor and a wind sensor.



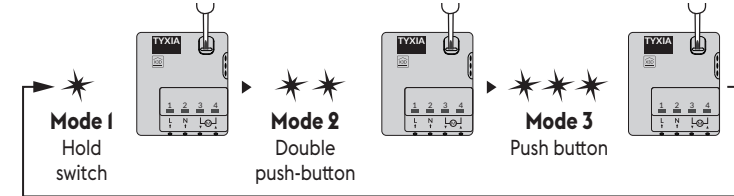
**STE 2000**  
P/N: 6300048



**CV**  
P/N: 6351393

An additional user guide is available on the TYXIA 5731 page of the DELTA DORE website. [www.deltadore.com](http://www.deltadore.com)

Briefly press the receiver button to select the mode.



- Confirm the selected mode by pressing the button for 3 seconds until the LED switches off.

**4 - Learning for the shutter travel time**

Perform a complete cycle from stop to stop:

- 1- Lower or raise the roller shutter completely to the stop.
- 2- Do the reverse action until the opposite stop is reached.

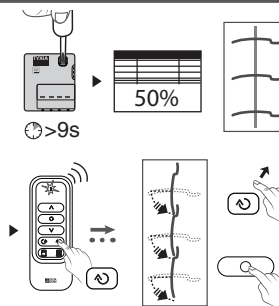


**Note:** The learning for the shutter travel time adjusts itself automatically for each complete cycle from stop to stop.

**5 - Learning for the tilt time**

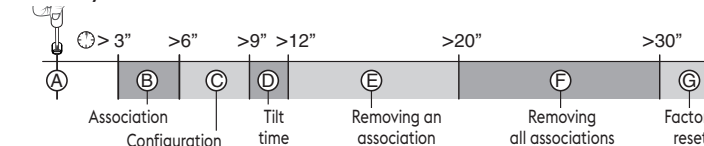
**Do not carry out this operation, if the TYXIA 5731 controls an awning.**

- Hold down the receiver button for 9 seconds, the LED switches off, then release. The shutter is positioned at the midpoint of its height.
- Press and hold the rotation button (step by step mode) until the shutter has rotated fully, then press stop.
- The tilt time is recorded.



**6 - Help**

Summary of functions:



• **Quick press on the button.**

**(A) Checking the receiver operating mode.**

Briefly press the button.

- The LED flashes:
- 1 red flash: MODE 1
- 2 red flashes: MODE 2
- 3 red flashes: MODE 3

• **Press and hold the button for x seconds.**

**(B) Association (refer to §2)**

**(C) Configuration (refer to §3)**

**(D) Learning for the tilt time (refer to §5)**

**(E) Removing an association**  
- Press the receiver's button for 12 seconds. (the removal method varies according to the transmitter associated, refer to the transmitter's user guide)

**(F) Removing all associations**

- Press the receiver's button for 20 seconds.
- Press and hold until the LED switches off after the rapid flashing phase.
- Release. The receiver has no wireless connection.

**(G) Factory reset**

- Press the receiver button for 30 seconds, the LED flashes then switches off. The receiver has no wireless connection and the configuration is reset (mode 1 by default).

The receiver locks in off mode. When an overload is detected, the product locks in off mode for 30 seconds before authorising a new activation. The LED flashes rapidly throughout this phase. Contact our customer service.