

TYXIA 5610 - TYXIA 5612

EN Lighting receiver



Technical characteristics

- Power supply:  
TYXIA 5610: 230 V~ 0.6 VA  
TYXIA 5612: 230 V~ 0.9 VA
- Stand-by consumption: 0.06 W
- Number of associated transmitters:  
16 maximum
- Storage temperature: -10°C/+70°C
- Operating temperature: -10°C/+40°C
- IP 40 (flush mounting box)
- Dimensions: 41 x 36 x 14.5 mm
- X3D wireless remote control device:  
868.7 MHz to 869.2 MHz

Compatibility

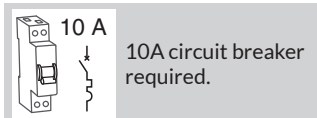
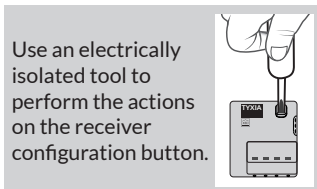
- ① 230 V halogen or 230 V incandescent bulbs.
- ② 230V energy-saving compact fluorescent bulbs.
- ③ 230V LED bulbs.
- ④ Very low voltage 12V halogen or LED bulbs with AC or DC electronic transformer.
- ⑤ Very low voltage 12V halogen bulbs with ferromagnetic or toroidal transformer.
- ⑥ Fluorescent tube.

| 230 V~ 50 Hz |       |       |       | ④     |       | ⑤ |       | ⑥ |       |
|--------------|-------|-------|-------|-------|-------|---|-------|---|-------|
| ①            | ②     | ③     | ④     | ④     | ⑤     | ⑤ | ⑥     | ⑥ | ⑥     |
|              |       |       |       |       |       |   |       |   |       |
| 200 W        | 100 W | 100 W | 100 W | 100 W | 150 W |   | 100 W |   | Hi-Fi |

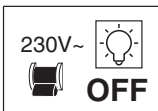
EN

Recommendations

- **IMPORTANT:** the control wires are not insulated from the mains power supply. All connected equipment must be marked CE and meet the requirements of the low voltage devices as well as assembly recommendations. Local control wires can be extended up to 10 m (separate from the 230 V).

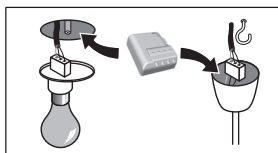
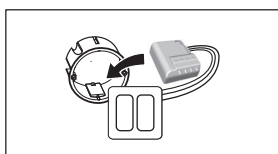


1 - Installation



Switch off the installation power supply

- You can install the lighting receiver in a flush-mounted box behind a switch or control push-button (automatic detection on use) or behind a ceiling.

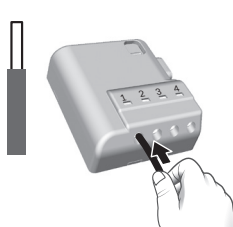


1.1 Connection instructions for terminals 1 2 3 4.

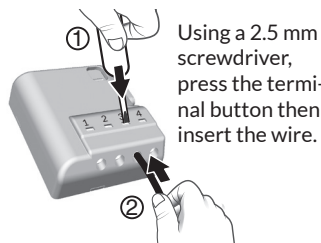
- Strip the wires while respecting the strip length specified on the product.
- Push the wire fully into the terminal.



1.1.1 Solid wires

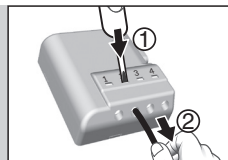


1.1.2 Stranded wires



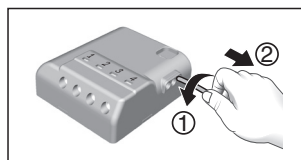
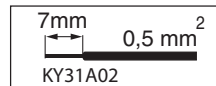
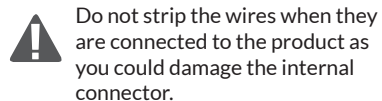
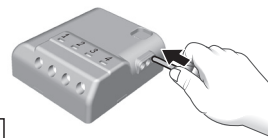
Removal recommendations

- Switch off the power supply.
- Use a 2.5 mm screwdriver to press the button of the front terminal before removing the wire.



1.2 Connection instructions for IN1 - COM - IN2 terminals

- Use the wires supplied.
- Push the wire fully into the terminal.

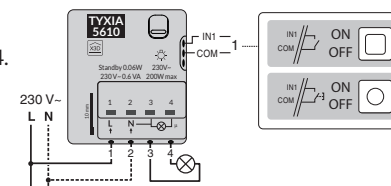


Removal recommendations  
Turn the wire while pulling on it.

1.3 TYXIA 5610 connection - 1 output.

Connect:

- The light to terminals 3 and 4.
- The switch to the IN1 - COM terminals (input 1).
- The 230 V power supply to terminals 1 and 2.

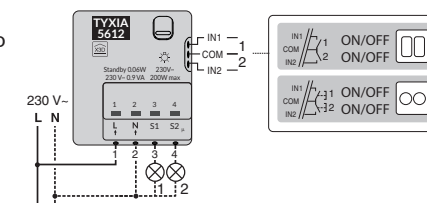


Switch the installation power back on to continue with the association operation.

1.4 TYXIA 5612 connection - 2 outputs.

Connect:

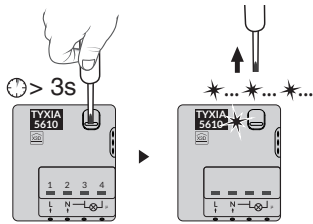
- Light 1 to terminal 3 (Output 1) and light 2 to terminal 4 (Output 2).
- The control for light 1 to the IN1 and COM terminals (input 1).
- The control for light 2 to the COM and IN2 terminals (input 2).
- The 230 V power supply to terminals 1 and 2.



Switch the installation power back on to continue with the association operation.

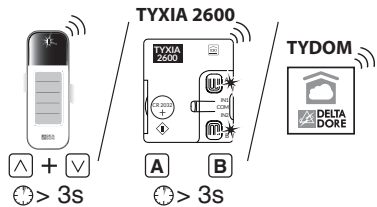
## 2 - TYXIA 5610 association

- 1 - Press and hold the receiver button for 3 seconds until the LED flashes, release.

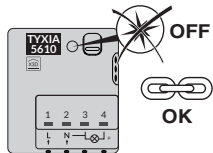


- 2 On the transmitter:

- Send the association command (Refer to the user guide).



- 3 When the receiver LED has stopped flashing. The products are now associated.



## 3 - TYXIA 5612 association

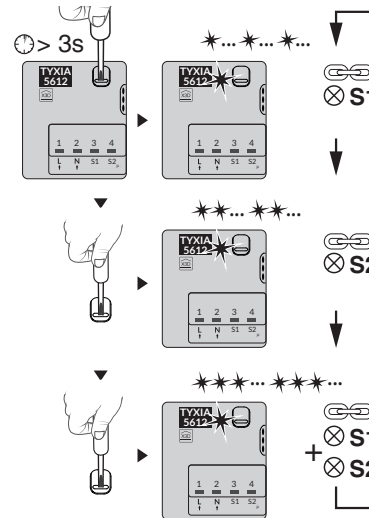
- 1 Select the channel to associate:

- Channel 1
- Channel 2
- Channel 1 and 2 simultaneously

- Press the button for 3 seconds until the LED flashes once, (channel 1 association mode), release.

- Briefly press the button, the LED flashes twice, (channel 2 association mode), release.

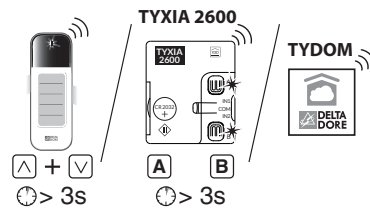
- Briefly press the button, the LED flashes 3 times, (association mode for channel 1 and channel 2 simultaneously), release.



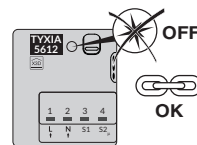
- 2 After selecting the channel to associate,

On the transmitter:

- Send the association command (Refer to the user guide).

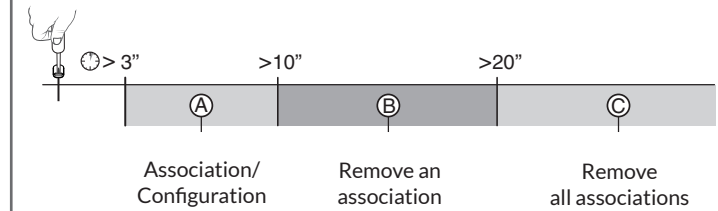


When the receiver LED has stopped flashing. The products are now associated.



## 4 - Troubleshooting

Summary of functions accessible using the receiver button:



- Press and hold the button for x seconds.

### A Association/Configuration

- Press the receiver button for 3 seconds until the LED flashes. Release.

### B Remove an association

(the removal method varies according to the transmitter associated, refer to the transmitter's user guide)

Example of removing a remote control association.

On the receiver:

- Press the receiver button for 10 seconds until the LED flashes rapidly, release.

On the remote control:

- Press the  $\wedge$  and  $\vee$  buttons for 3 seconds.

- Make sure that the receiver LED has stopped flashing. The products are no longer associated.

**IMPORTANT:** For the TYXIA 5612, this action removes the association on both channels.

### C Remove all associations

- Press the receiver's button for 20 seconds.

- Press and hold until the LED switches off after the rapid flashing phase.

- Release. The receiver has no wireless connection.

### The receiver locks in off mode

When an overload is detected, the product locks in off mode for 30 seconds before authorising a new activation. The LED flashes rapidly throughout this phase.

To exit the receiver from this secure mode, replace the bulb connected by a bulb with lower power (refer to compatibility table).



An additional user guide is available on the TYXIA 5610 and TYXIA 5712 pages of the DELTA DORE website.  
[www.deltadore.com](http://www.deltadore.com)