



TYXIA 4801 / 4811

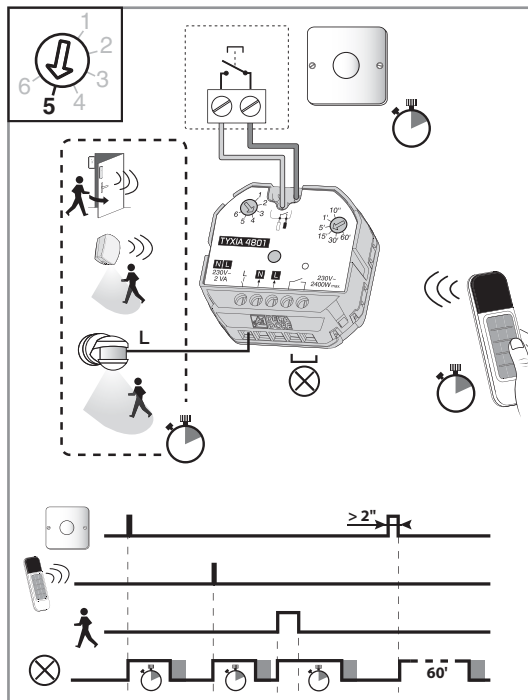
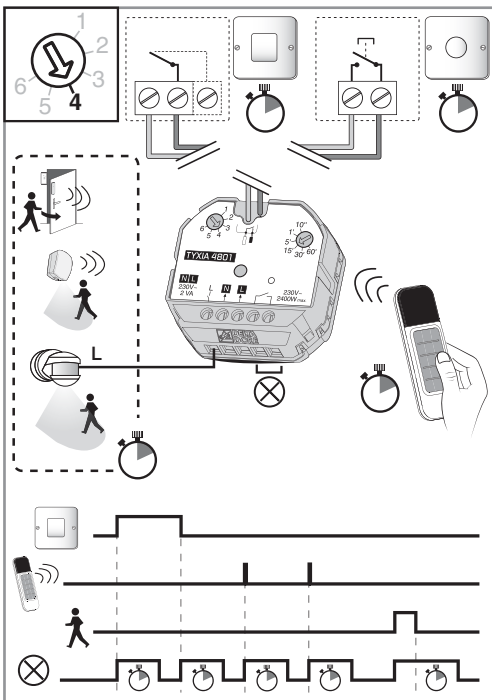
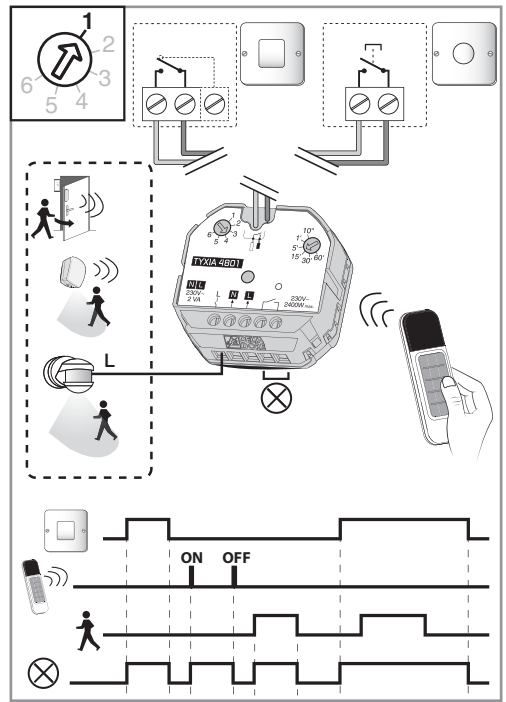
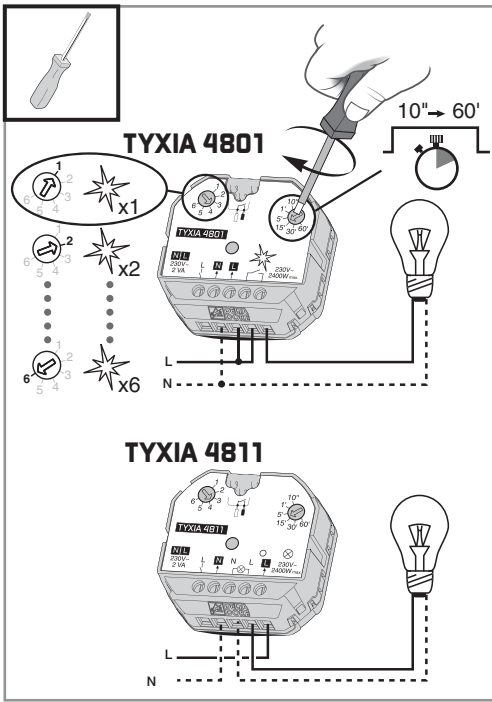
www.deltadore.com

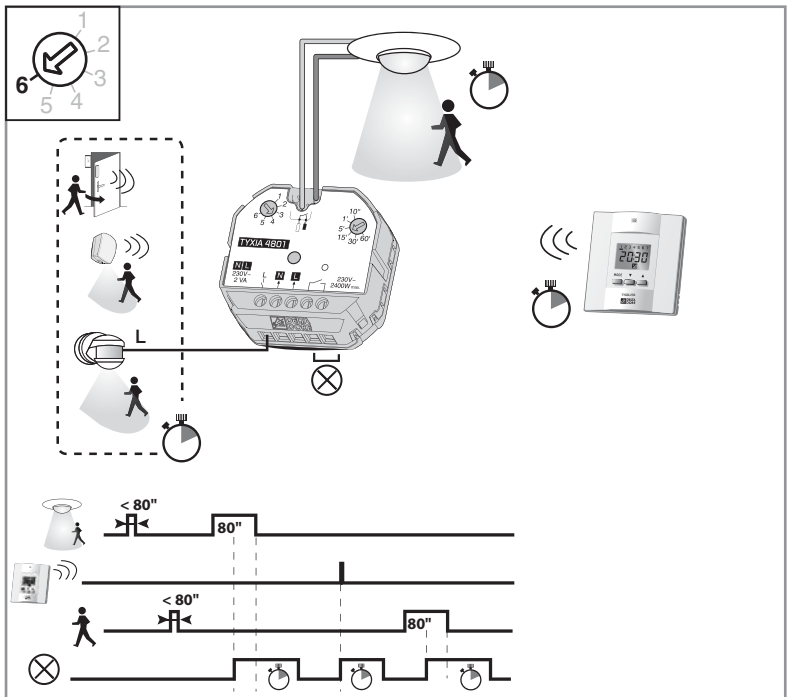
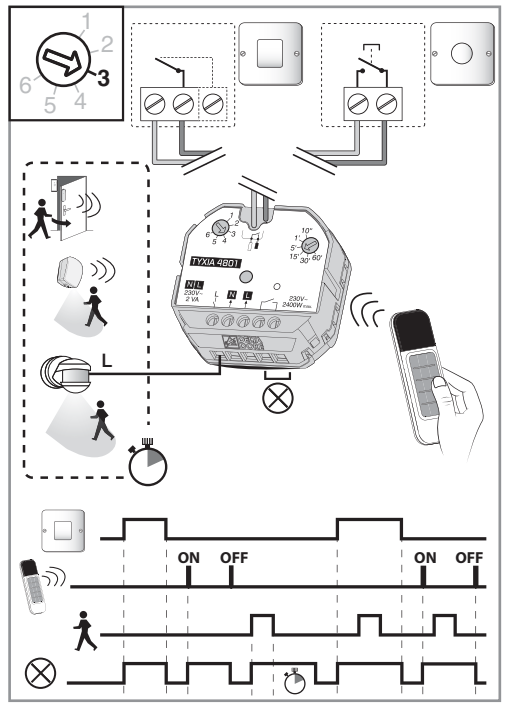
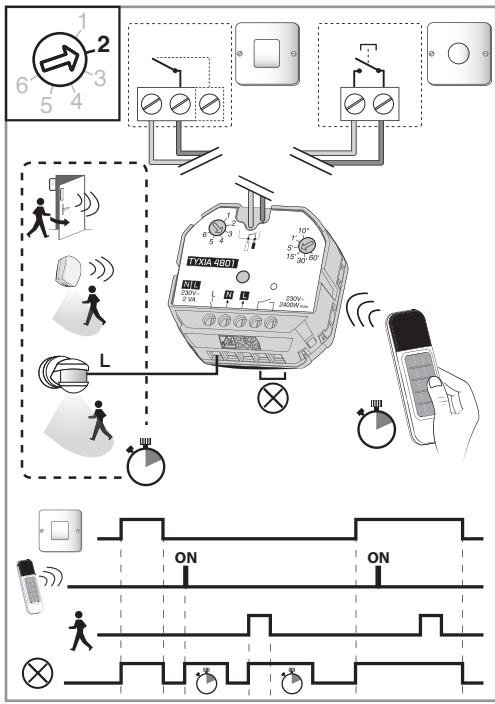


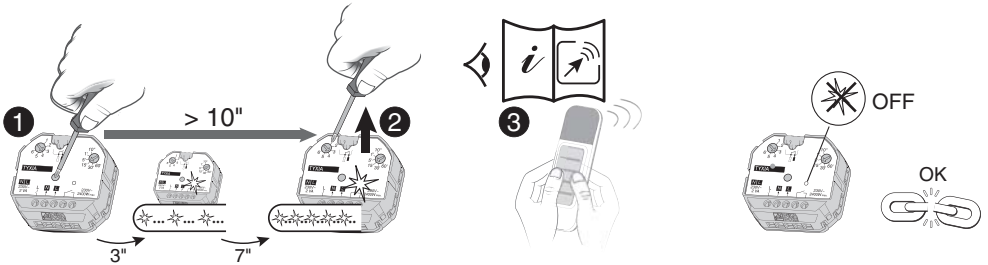
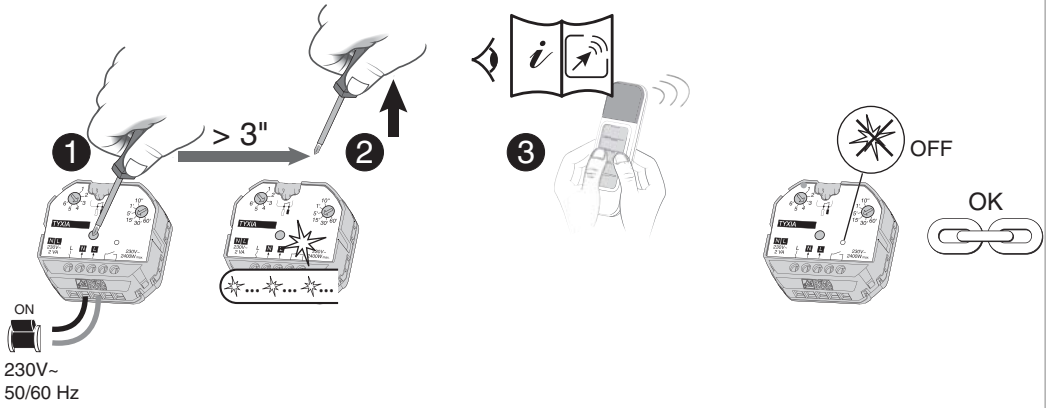
Important product information (1 2 4)

	TYXIA 4811	TYXIA 4801
	230 V~, 50/60 Hz 2 VA	
	= Class II	
	868 MHz (EN 300 220) 100 m	
	... 16 max.	
°C	-5°C / +35°C	
	50 x 47 x 33 mm	
CE	R&TTE 1999/5/CE	
	TYXIA 4811	TYXIA 4801
	2300 W max. - 230 V~	

230 V~, 50/60 Hz								
2300 W max	500 W	500 W	1000 W		500 W	500 W		







RESET

