



TYXIA 1705



Technical characteristics

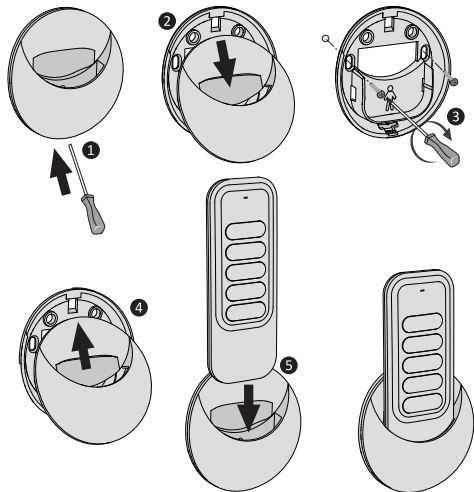
- Power supplied by 3V lithium battery, CR2430
- Class III insulation
- X3D Transmission frequency:
868.7 MHz to 869.2 MHz
- Maximum radio power < 10 mW
- Receiver category II
- Wireless range: 100 to 300 metres outside,
variable depending on the associated equipment
(the range can vary depending on the installation
conditions and the electromagnetic environment)
- Mounted on a base
- Dimensions: 46 x 121 x 10.7 mm
- Degree of protection: IP 40
- Operating temperature: 0 to +55°C
- Storage temperature: -10 to +70°C
- Installation in an environment with normal
pollution levels

Contents

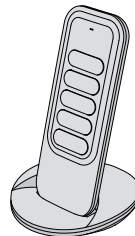
1/ Location/Mounting	14
1.1 Mounted on the wall	14
1.2 Placed on a flat surface	15
2/ Wireless association	16
2.1 Associating a motor or receiver	16
3/ Save the favourite positions	19
4/ Use	20
5/ Troubleshooting	21

1/ Location/Mounting

1.1 Mounted on the wall



1.2 Placed on a flat surface



EN

2/ Wireless association

This chapter allows you to associate a remote control with an X3D wireless motor or X3D roller shutter receiver.

2.1 Associating a motor or receiver

2.1.1 A single motor is turned on

- 1 Set the motor or receiver to association standby mode.
- 2 On the remote control press \wedge and \vee at the same time and hold for 3 seconds, until the LED flashes. Release.
- 3 The shutter is activated briefly to confirm the association.

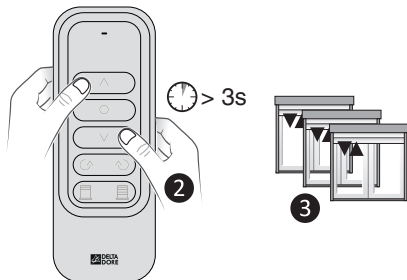
To exit association mode, press \bigcirc for 3 seconds.

1 Activating association standby mode

- Motor:

- 1) Upon turning on for the first time, if the motor was not associated before.
- 2) From a remote control used for the motor (already associated) press the \bigcirc button for 3 seconds.

- **Receiver:** press its button for 3 seconds until the LED flashes.



2/ Wireless association

2.1.2 Several motors or receivers are in association standby mode

- 1 On the remote control press \wedge and \vee at the same time and hold for 3 seconds, until the red LED flashes. Release.
*The remote control searches the different motors or receivers.
Its LED flashes, alternating red/green.*
- 2 When the LED starts flashing red slowly, press the \bigcirc button as many times as required to select the motor (receiver) to associate.
The corresponding shutter activates briefly.
- 3 Once the motor (receiver) has been found, press \wedge .
- 4 The shutter is activated briefly to confirm the association.



To exit association mode, press \bigcirc for 3 seconds.





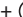

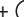
2.2 Associate multiple motors or receivers

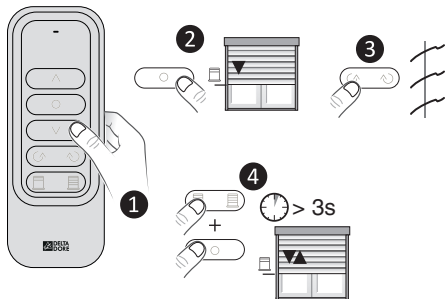
- 1 Set the motors (receivers) to association standby mode.
- 2 On the remote control press \wedge and \vee at the same time and hold for 3 seconds, until the LED flashes. Release.
The remote control searches the different motors or receivers. Its LED flashes, alternating red/green.
- 3 When the LED starts flashing red slowly, press \wedge and \vee at the same time and hold for 3 seconds until the red LED turns on.
- 4 The shutters are activated briefly to confirm the association.

To exit association mode, press \bigcirc for 3 seconds.




3/ Save the favourite positions

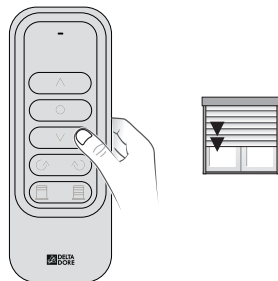
You can save up to 2 favourite positions:  and .





- 1** **2** Set the shutter to the required position e.g. .
- 3** Press  or  to set the angle of the slats.
- 4** Press  +  or  +  and hold for 3 seconds to save the position.
The shutter is activated briefly.
Release.



4/ Use

- Press ,  or  to control the roller shutter. The green LED indicates that the receiver has correctly received the information.



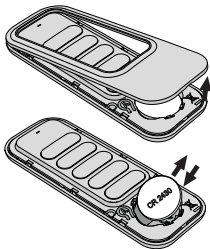
- Press  or  to set the angle of the slats.
- Press  to go to favourite position 1 (if it has been saved).
- Press  to go to favourite position 2 (if it has been saved).

5/ Troubleshooting

- **The red LED flashes several times every time a button is pressed.**

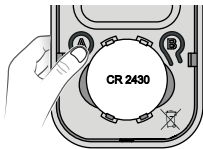
The battery is low.

Change the battery.



- **Remove an association**

- Remove the front face of the remote control.
- Press button A.
The red LED flashes.
- Press ○ as many times as required to select the motor (receiver) to remove.
- Press the √ button.
- Press button A to exit.



- **Remove all associations**

- Remove the front face of the remote control.
- Press button A.

The red LED flashes.

- Press the ○ and √ buttons at the same time and hold for 3 seconds.
- Press button A to exit.



www.deltadore.com



2704638 Rev.01