



TYXIA 1700



Technical characteristics

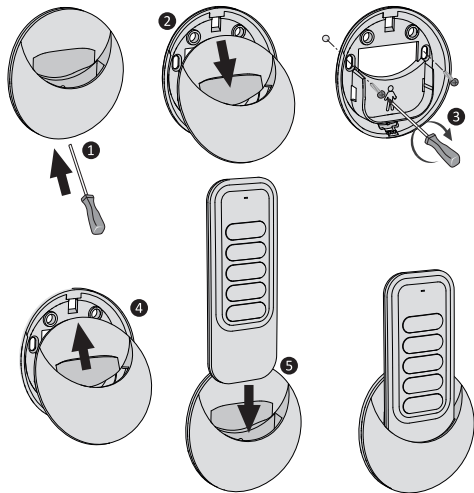
- Power supplied by 3V lithium battery, CR2430
- Class III insulation
- X3D Transmission frequency:
868.7 MHz to 869.2 MHz
- Maximum radio power < 10 mW
- Receiver category II
- Wireless range: 100 to 300 metres outside,
variable depending on the associated equipment
(the range can vary depending on the installation
conditions and the electromagnetic environment)
- Mounted on a base
- Dimensions: 46 x 121 x 10.7 mm
- Degree of protection: IP 40
- Operating temperature: 0 to +55°C
- Storage temperature: -10 to +70°C
- Installation in an environment with normal
pollution levels

Contents

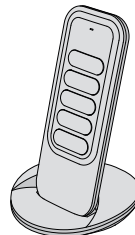
1/ Location/Mounting	12
1.1 Mounted on the wall	12
1.2 Placed on a flat surface	13
2/ Wireless association	14
3/ Use	16
4/ Troubleshooting	17

1/ Location/Mounting

1.1 Mounted on the wall



1.2 Placed on a flat surface



EN

2/ Wireless association

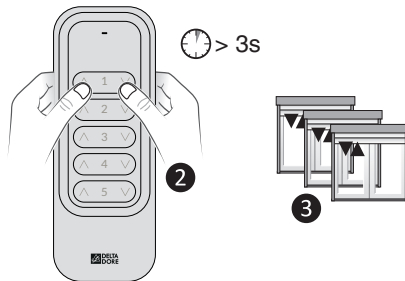
To associate a control channel (1 to 5) with one or more X3D wireless motor(s), X3D roller shutter receiver(s) or X3D lighting receiver(s).

You can associate up to 16 receivers per channel.

- 1 Set all the motors or receivers to be associated to association standby mode.
- 2 On the remote control (channel 1 to 5), press \wedge and \vee at the same time and hold for 3 seconds, until the LED flashes. Release.
- 3 The blinds (or lights) turn on briefly when they are associated.

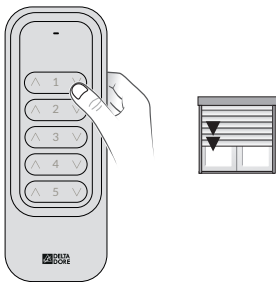
1 Activating association standby mode

- Motor: from a remote control used for the motor (already associated) press the \bigcirc button for 3 seconds.
- Receiver: press its button for 3 seconds until the LED flashes.



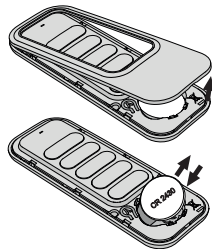
3/ Use

Press \wedge or ∇ to control the light(s) or roller shutter(s) for the selected channel.
The green LED indicates that the receivers have correctly received the information.

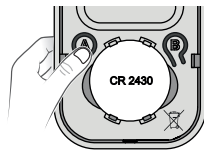


4/ Troubleshooting

- **The red LED flashes several times every time a button is pressed.**
The battery is low.
Change the battery.



- **Remove an association**
 - Remove the front face of the remote control.
 - Press button A.
 - The red LED flashes.*
 - Press the \wedge and ∇ buttons at the same time and hold for 3 seconds.
 - Press button A to exit.





www.deltadore.com



2704636 Rev.01