

TYBOX 5100 / TYBOX 5101

www.deltadore.com

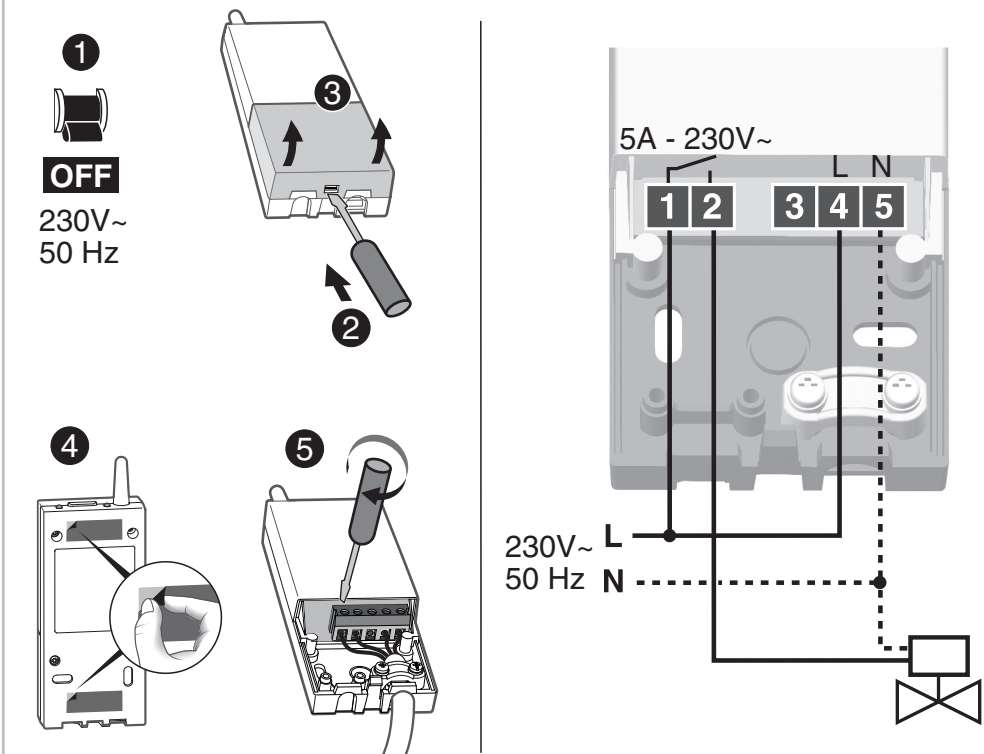
Important product information (24)



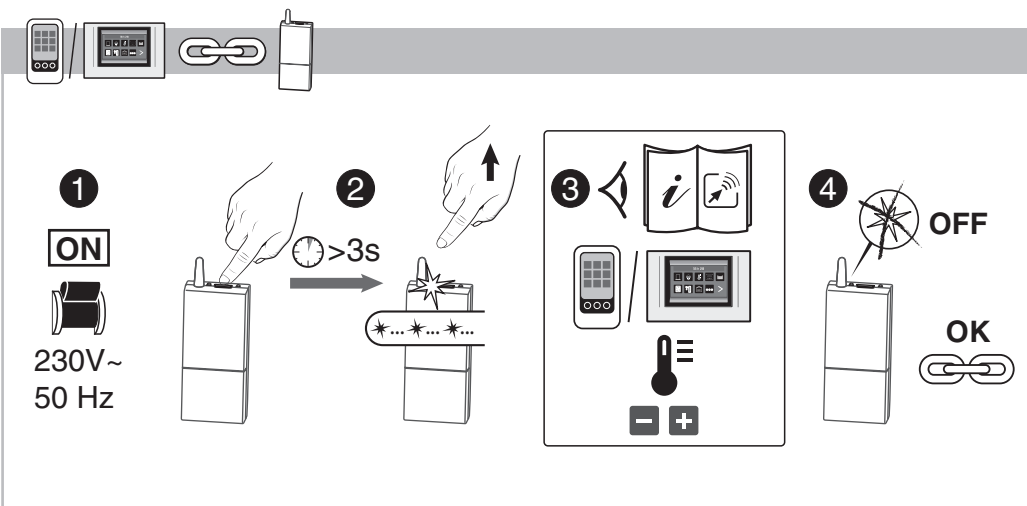
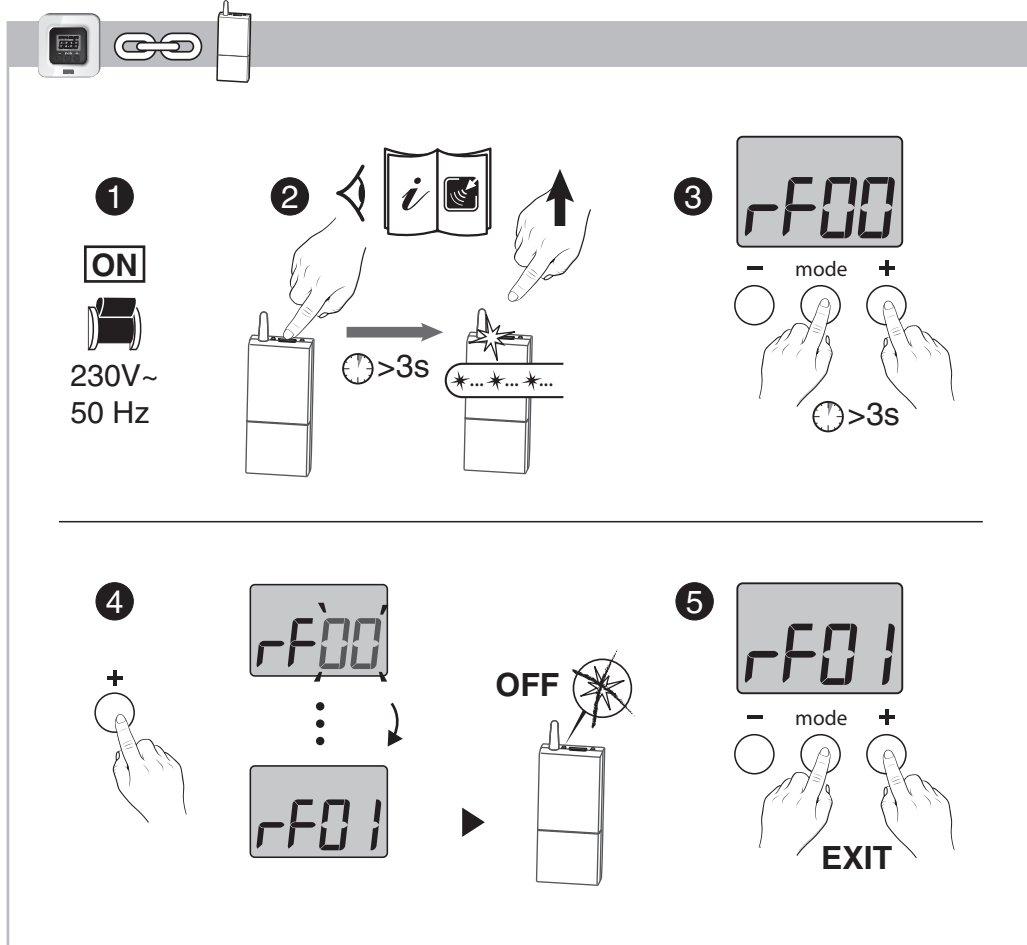
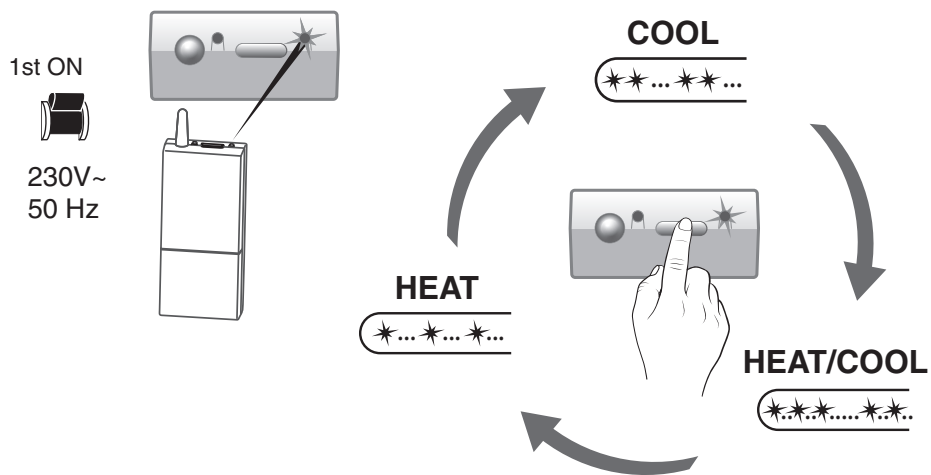
	TYBOX 5100	
	RF 6000	TYBOX 5101
	230 V~, 50 Hz - 1,8 VA	2 x 1,5V - AAA LR03
	868 MHz (EN 300 220) 100 m	
	16 max.	
°C	-5°C / +40°C	
	54 x 140 x 25 mm	80 x 84 x 21 mm
	R&TTE 1999/5/CE	
	5 A max., 230V~	/

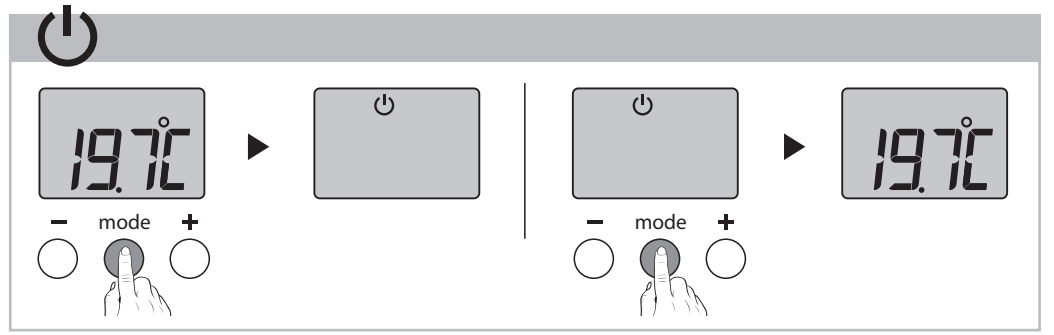
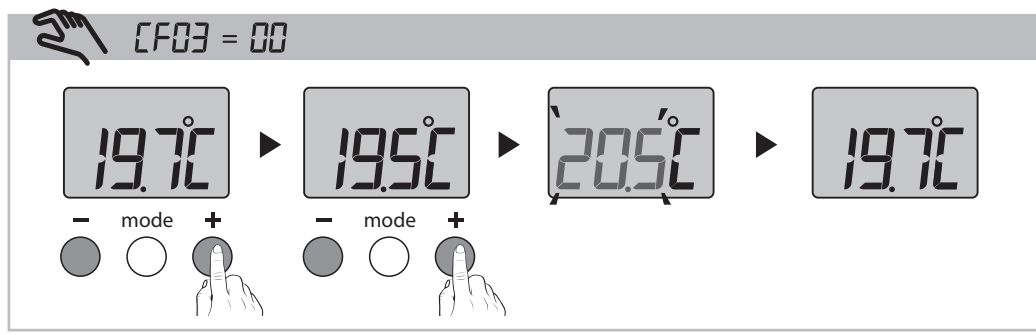


RF 6000

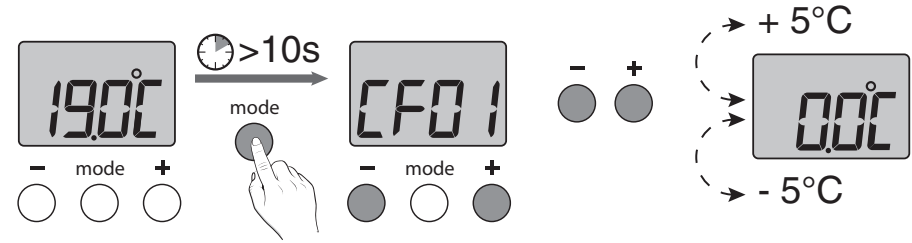


MODE : HEAT - COOL - HEAT/COOL

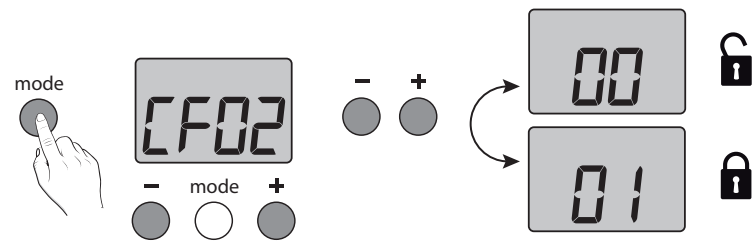




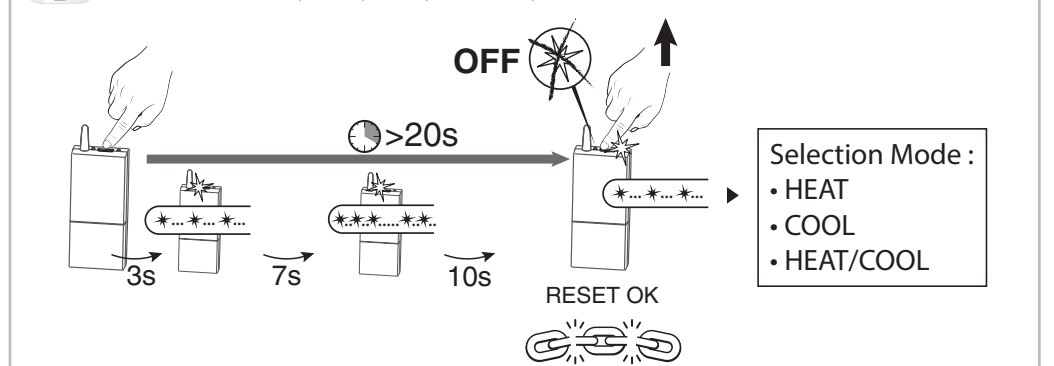
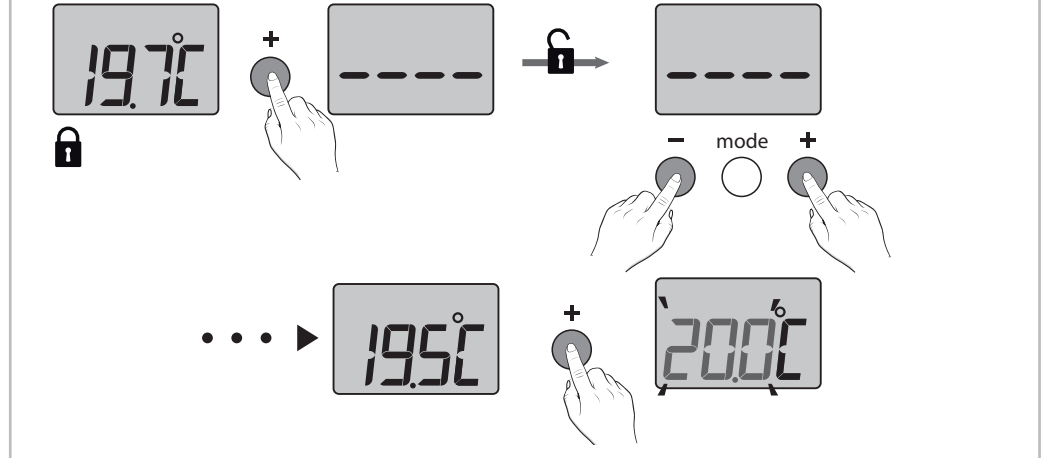
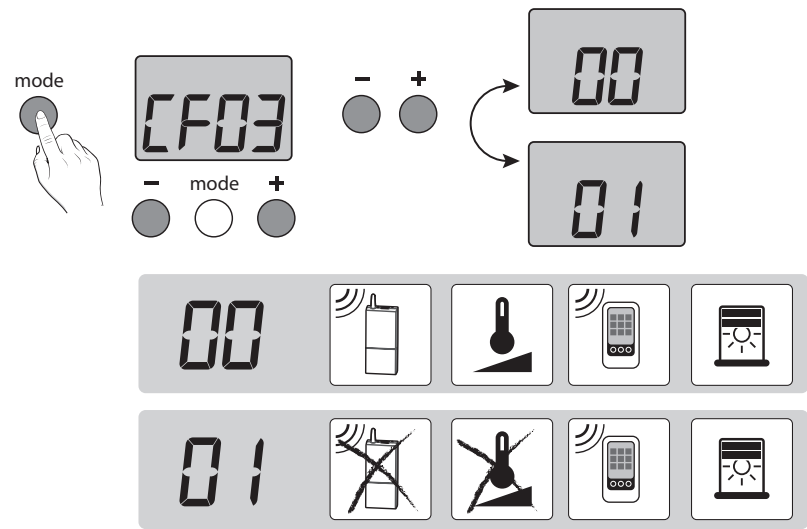
CF01 Correction de la température mesurée /
Adjustment of the current temperature



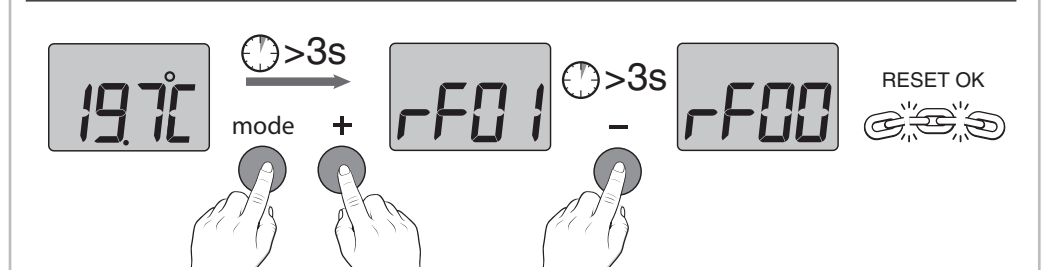
CF02 Verrouillage / locking



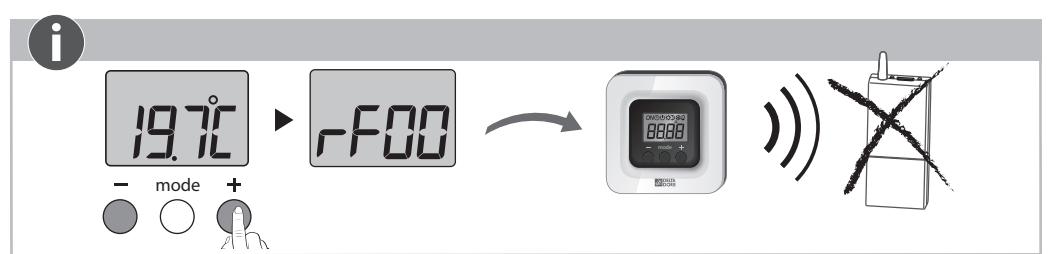
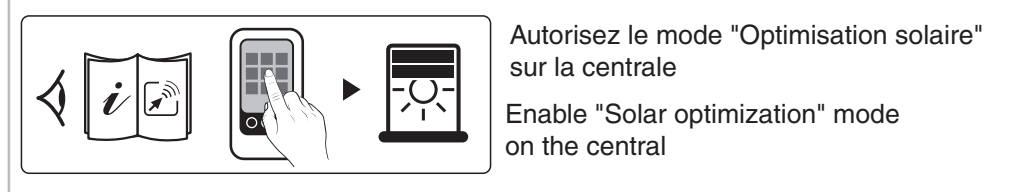
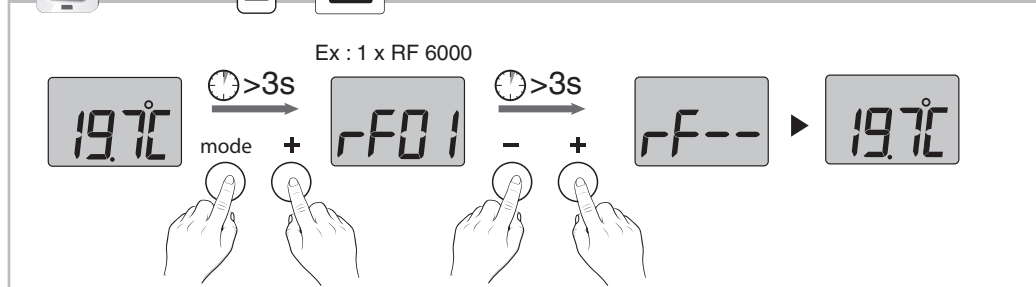
CF03 Choix du mode de fonctionnement /
Selection of operating mode



TYBOX 5100



Optimisation solaire / Solar optimization



- Récepteur / Receiver / Receptor / Receptor / Ricevitore / Empfänger / Odbiornik / Ontvanger / Příjímač / Mottagare / Modtager / Mottaker / Vastaanotin / 接收器 /
- Émetteur / Transmitter / Emisor / Emissor / Emittitore / Sender / Nadajnik / Zender / Vysílač / Sändare / Transmitter / Sender / Lähetin / 发射器 /
- Association / Association / Asociación / Associação / Associazione / Verbindung / Przepisanie / Verbinding / Přirazení / Associering / Tilknytning / Forbindelse / KytKentä / 连接 /
- Suppression d'une association / Delete one association / Borrar asociación / Eliminar associação / Eliminare le associazioni / Verbindung löschen / Usunięcie przypisania / Een verbinding opheffen / Zrušit přiřazení / Ta bort associationerna / Sletning af en tilknytning / Slette en Forbindelse / Poista kytKentä / 删除一个连接 /
- Reset total / Total reset / Reset total / Reinicialização total / Reset totale / Reset / Reset całkowity / Totale reset / Celkový reset / Total återställning / Total nulstilling / Total nullstilling / Nollaa kaikki / 完全初始化设置 /

- Clignotement lent / Slow flashing / Parpadeo lento / Intermitència lenta / Lampeggiamento lento / Langsames blinken / Wolne miganie / Langzaam knipperen / Pomalé blikání / Blinking långsam / Langsomme blink / Langsomme blink / Hidas vilkunta / 缓慢的闪烁 /
- Clignotement rapide / Fast flashing / Parpadeo rápido / Intermitència ràpida / Lampeggiamento rapido / Schnelles blinken / Szybkie miganie / Snel knipperen / Rychlé blikání / Snabb blinkningar / Hurtige blink / Raske blink / Nopea vilkunta / 快速的闪烁 /
- Temps d'appui / Press time / Tiempo de pulsación / Tempo de pressão / Tempo pressione / Tastendruckdauer / Czas naciskania / Druktij / Doba stisknutí / Kopplingstid / Tid Nedtrykning / TrykKettid / Painallisaika / 按键时间 /
- Voyant éteint / LED off / Testigo apagado / Indicador apagado / Spia spenta / Kontrollleuchte aus / Lamka gaśnie / Controlelampje uit / LED nesvíti / Lampan släcks / Kontrolllampe slukket / Lysdiode slukket / Merkkivalo palaa / 指示灯熄灭 /