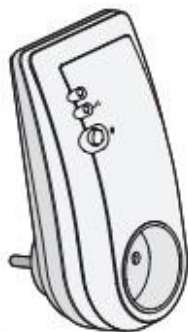


RF 6650

EN Radio-controlled receiver 10A

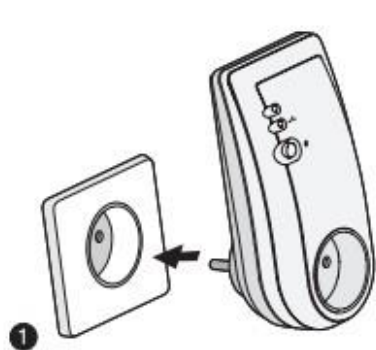


www.deltadore.com

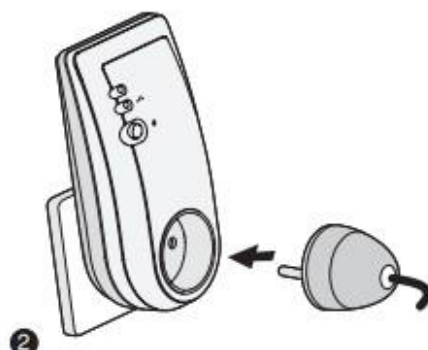


	230V~, 50 Hz - 2 VA
	Class I insulation
	868 MHz (EN 300 220) 100 m
	72 x 140 x 50 mm
	10A, 230Veff Cos φ =1
	IP 20
	0°C → +40°C
	Important product information (📖)

Installation



1 Plug the receiver directly into a wall socket. The power light comes on to indicate it has been switched on.



2 Then connect the plug on the electrical appliance's, which will be controlled by this receiver.

Special mode without thermostat

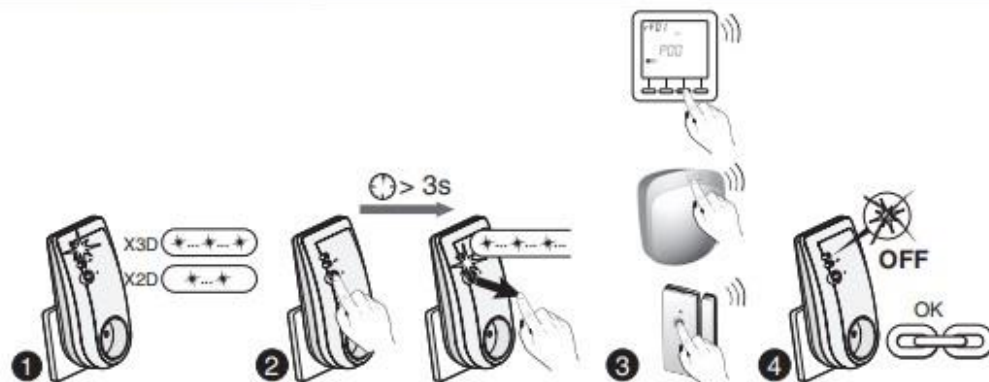
Without any associated thermostat or without any signal from the thermostat for more than one hour, the receiver will work in a special mode (30% in PI regulation, OFF in On/Off regulation). The two LEDs will flash simultaneously. To switch to the continuous heating mode (100%), press the receiver button once. The LED 1 will stop flashing (ON) and the LED 2 will continue to flash. Press one more time the receiver button to go back to the previous mode.

X3d -> X2d



When switching on the installation (1), you have 4 seconds to press 3 times the receiver button (2). The LED flashes (3): 2 times for X2D, 3 times for X3D.

Association (16 max.)



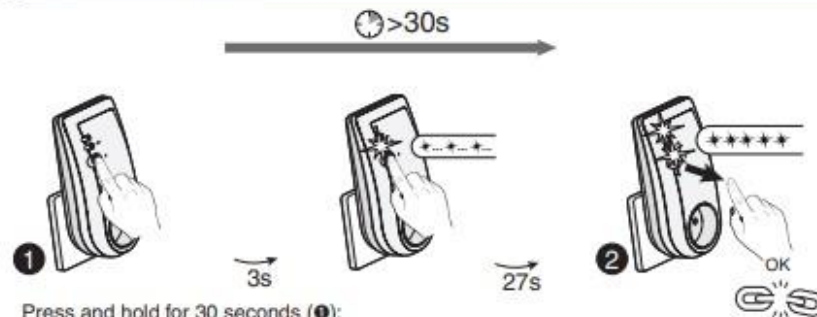
1 When switching on the installation (1) Wait until the LED flashes: 2 times (X2D) or 3 times (X3D).

2 Press the receiver button for 3 seconds until its LED flashes. Release.
! When associating a Tydom 1.0 (smartphone control), press again but briefly the receiver button. Release. The LED flashes quickly. Geben Sie über den Sender die

3 Send the association command to the transmitter (refer to the user guide).

4 Make sure that the receiver LED has stopped flashing. The products are associated.

Delete associations



1 Press and hold for 30 seconds (1):
- after 3 seconds, the LED flashes slowly.
Keep the receiver button pressed until both LEDs flash. Release the button (2).