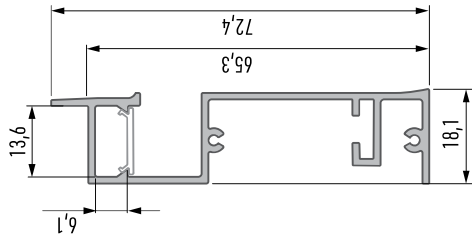


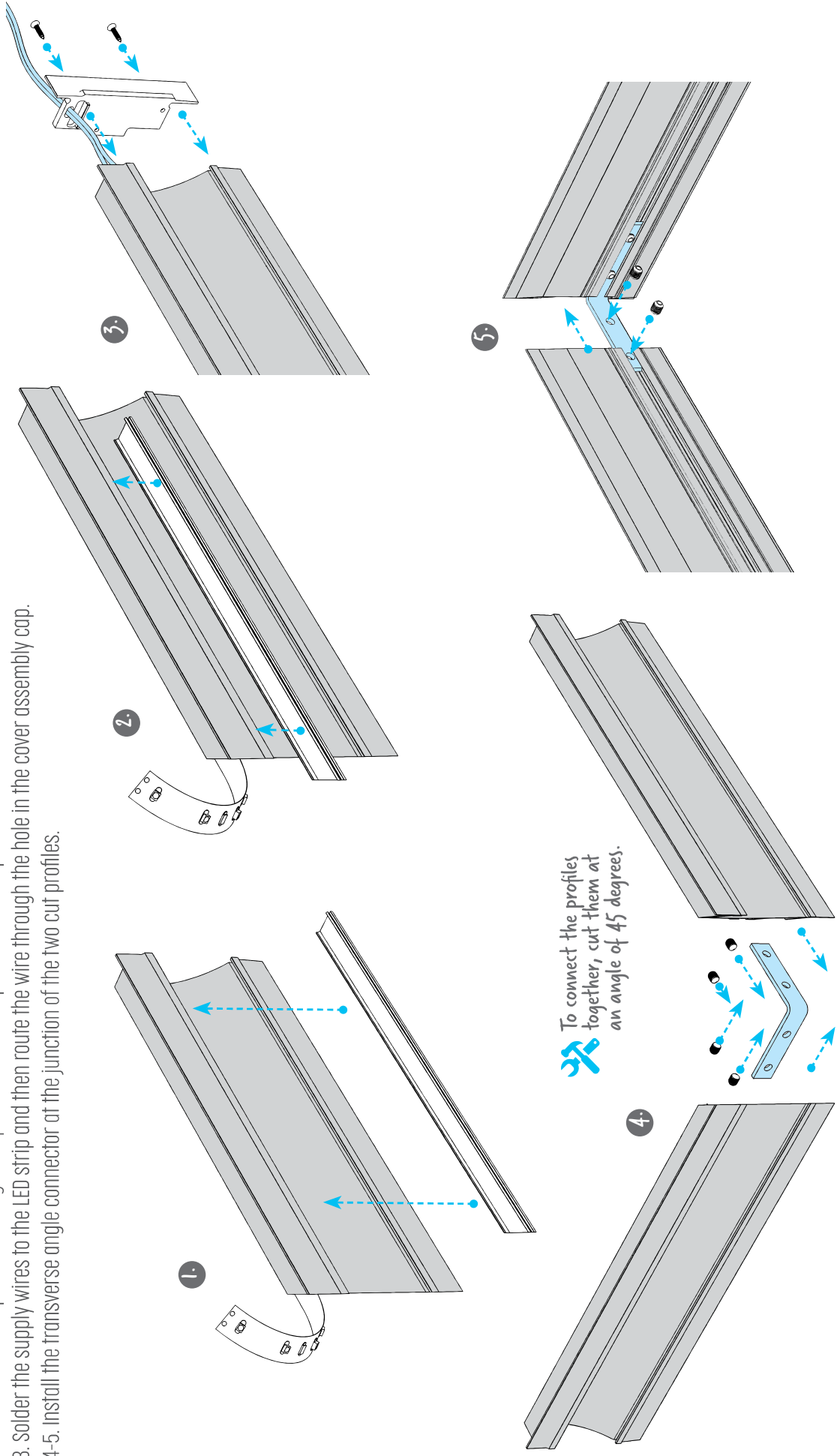
| | |
|---|------------------------|
| NAME | TYPE |
| PROFILE TIANO | ARCHITECTURAL RECESSED |
| APPLICATION | |
| FOR LIGHTING OF RESIDENTAL ROOMS AND COMMERCIAL BUILDINGS | |

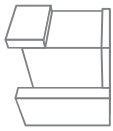


| | |
|---|------------------------|
| NAME | TYPE |
| PROFILE FLARO | ARCHITECTURAL RECESSED |
| APPLICATION | |
| FOR LIGHTING OF RESIDENTAL ROOMS AND COMMERCIAL BUILDINGS | |

LED strip assembly and TIANO profile connection diagram.

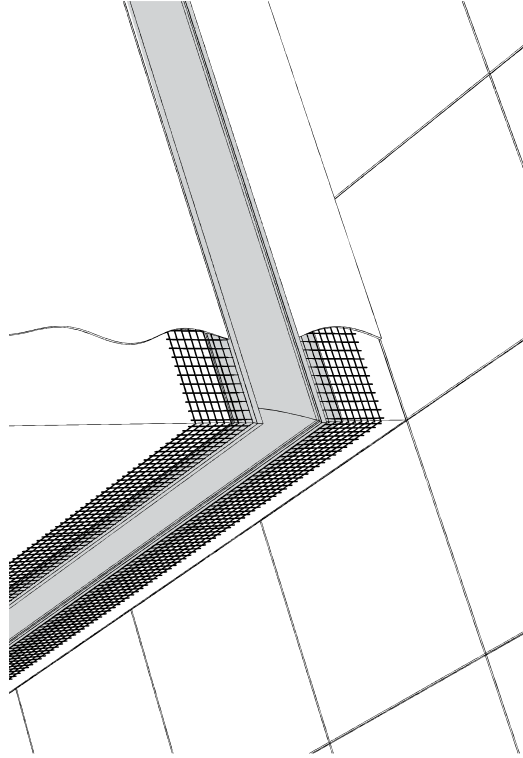
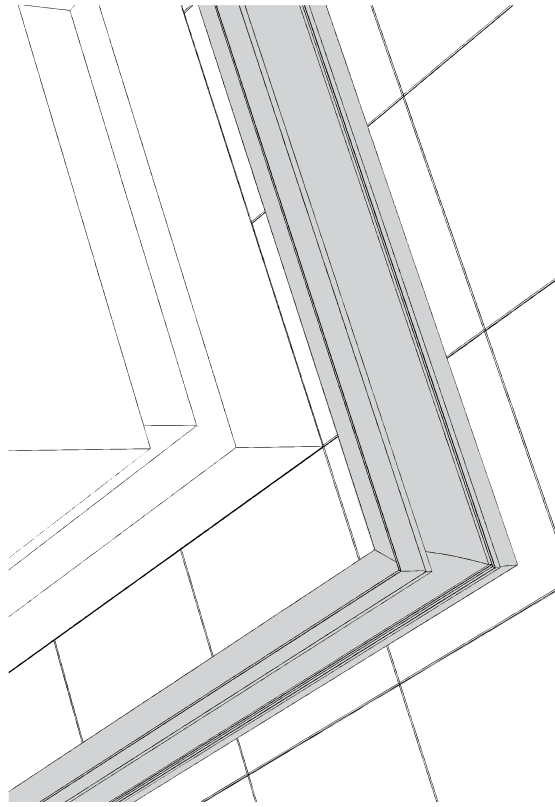
- 1-2. Glue the LED strip into the designated place in the TIANO profile and then put on the Basic cover.
3. Solder the supply wires to the LED strip and then route the wire through the hole in the cover assembly cap.
- 4-5. Install the transverse angle connector at the junction of the two cut profiles.




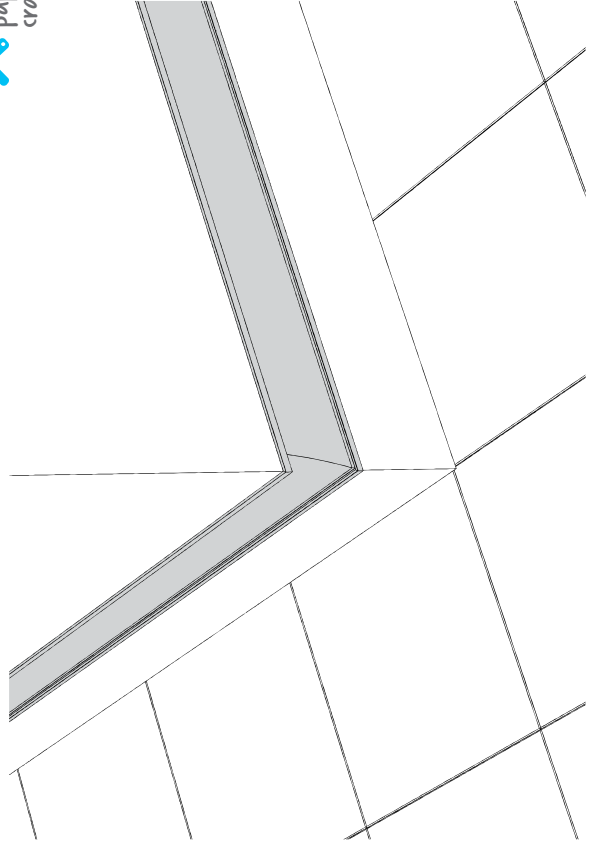


ARCHITECTURAL / RECESSED TIANO

Installation of the TIANO profile in the wall and the stages of gypsuming.



 You can use mesh, felt or a special paper strip in order to prevent cracks in the gypsum layer.



Assembling the TIANO profile and mounting the profile in the wall as a staircase luminaire.

1-3. Mount the LED strip and the Plexi TIANO cover in the TIANO profile. Solder the supply wires to the strip and route them through the hole in the cap. Place the profile in the previously milled hole.

4-5. Apply the self-adhesive mesh to the wall surface and start gypsuming and applying paint.

