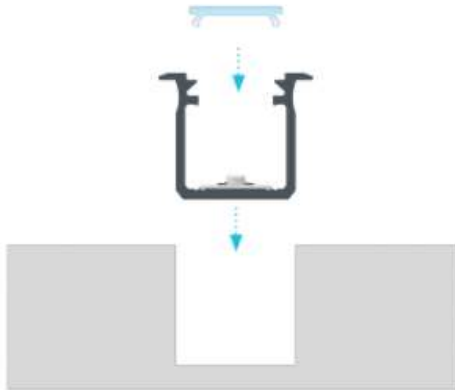




INSTALLATION DIAGRAMS

1



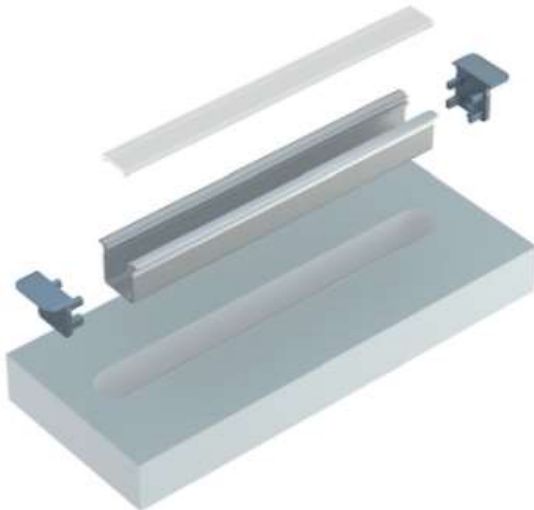
Installation instruction for recessed profile G with a BASIC cover

2



The end result of installation of recessed profile G with a BASIC cover

3

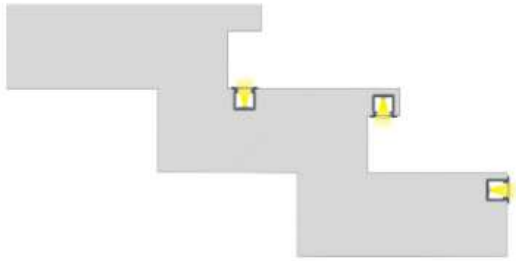


Isometric view before mounting profile G inside a milled groove with BASIC cover and end caps

4



The end result of installation of recessed profile G with a BASIC cover in a plasterboard

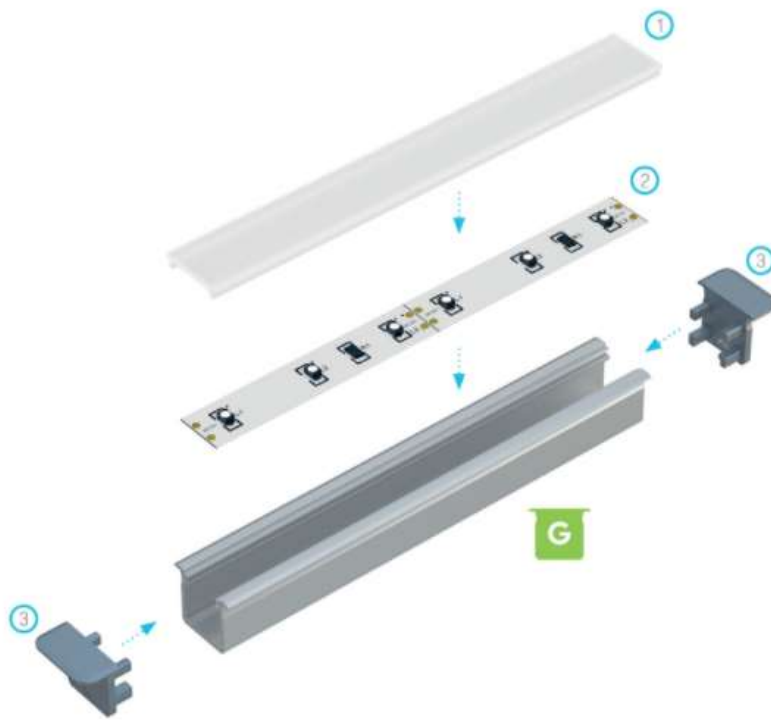


Methods of installing profile G inside milled groove using stairs as an example



Connecting profiles G with a BASIC cover at 90° in plasterboard

7



Assembly schematic for the elements of the lighting system using recessed profile G and (1) a BASIC cover, (2) a LED strip, (3) end caps with hole