

B INSTALLATION DIAGRAMS

1



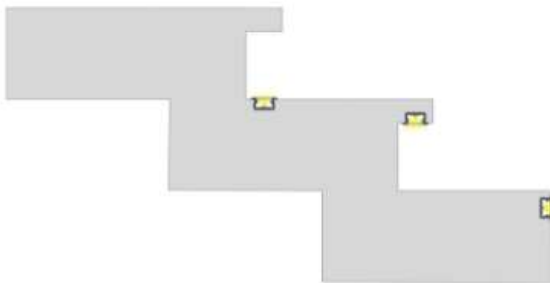
Installation instructions for recessed profile B with a BASIC cover

2



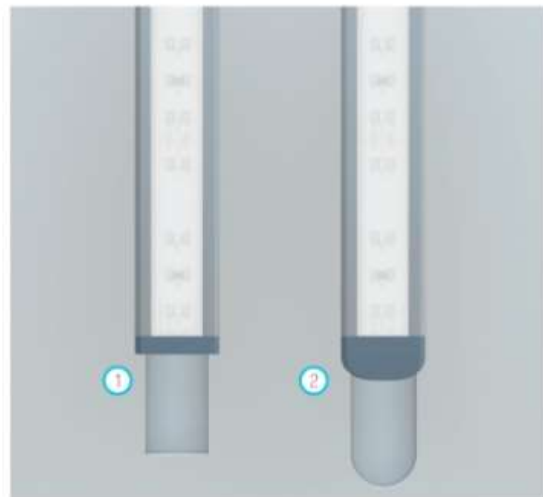
The end result of installation of recessed profile B with a BASIC cover

3

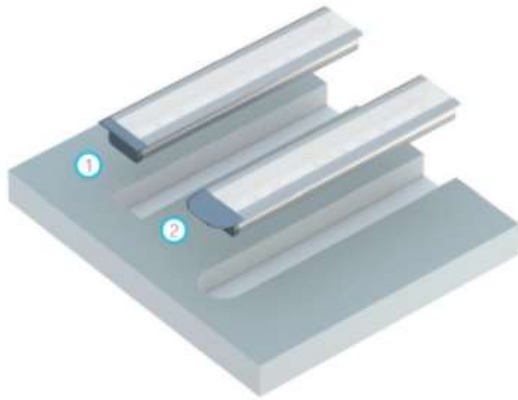


Installation of profile B inside a milled groove using stairs as an example

4



Installation of profile B inside a milled groove (1) with flat end cap, (2) with round end cap

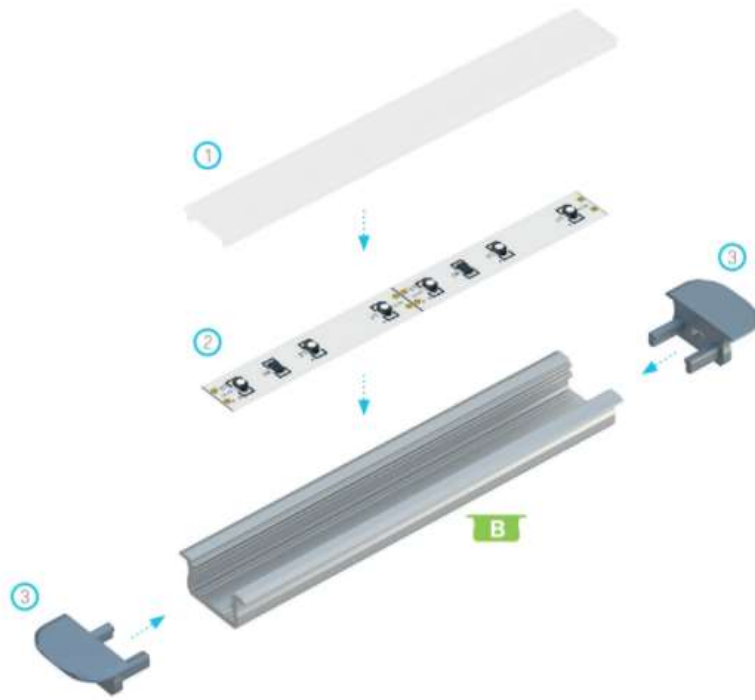


Isometric view before mounting profile B inside the milled groove (1) with flat end cap, (2) with round end cap



Connecting profiles B inside milled groove at an angle of 90°

7



Assembly scheme for elements of the lighting system using profile B and (1) a BASIC cover, (2) a LED strip, (3) rounded caps with hole