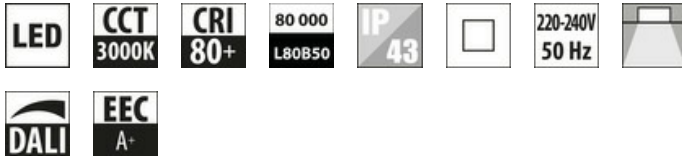


LED downlight with opal cover



Downlight MODUS SPMI LED 2000lm V2, 3000K, Ra80, 500mA DALI, metal white ring 240mm

Code: SPMI2000KO3V2DB/DALI
EAN: 8595073793796



Vlastnosti svítidla

Product category:	Downlight/spot/floodlight	Degree of protection (IP):	IP43
Color housing:	White	Surface protection:	Powder coating
Material housing:	Aluminium	Suitable for built-in mounting:	Yes

Světelný zdroj

Lamp type:	LED not exchangeable	Effective luminous flux (lm):	2100
System power (W):	20	Luminaire efficacy (lm/W):	105
Color temperature (K):	3000	Color rendering index CRI:	80-89
Rated life time L80/B50 (h):	80000	With lamp:	Yes
Colour of light:	White		
Colour consistency (McAdam ellipse):	SDCM3		
Energy efficiency class of the built-in lamp:	A++, A+, A (LED)		

Optický systém

Optical system:	SPMI	Light outlet:	Direct
Reflector:	High-gloss	Light sharing:	Symmetric
Material cover:	Glass opal	Radiation angle:	Wide beam 41-80°

Rozměry

Outer diameter (mm):	240	Height/depth (mm):	87
Built-in height/depth (mm):	87	Built-in diameter (mm):	225
Weight (kg):	2		

Elektrické vlastnosti

Protection class:	II	Connection type:	Pinching contact
Voltage type:	AC	Type of control gear:	LED operating device current-controlled
Number of poles:	1	Nominal voltage (V):	220...240
Control gear included:	Yes	Type of wiring:	Ending
Dimming DALI:	Yes		